

[View this email in your browser](#)



INNER-CITY WELLINGTON

Te Reo Pokapū o Pōneke

VOICE OF TE ARO AND WELLINGTON CENTRAL



In Our Patch

This is an informal, occasional, not to be taken too seriously, newsy pānui about some of the things we've noticed happening in the inner-city.

www.innercitywellington.nz



It was a recent buzzy bee goodbye to [Colony](#) on Victoria Street ...but a new arrival has flown in. It's clothing store [Ricochet](#) who have landed from the BNZ

Bank Arcade after a quick refit.



Intriguing screens have just lit up with colour bars on the Embassy Theatre building. I guess the Embassy Trust will reveal all soon.



No chance of a sneaky Big Mac while waiting for the bus in Courtenay Place anymore.

McDonald's has just shut up shop - maybe it's about foot traffic in our part of town, or maybe uncertainty about leasing. Who knows?



It was late night cone city in Tory Street recently. The road was closed and big Tonker toys were in action.

There was serious steel welding going on - all part of the refurb work on the old

Mountain Safety House which is transforming into a new [TRYP by](#)

[Wyndham hotel](#), opening later this year.



The lights are on, the outdoor heaters are in place, the signage is up ... the new look Astoria is counting down to its opening - 18th of May!

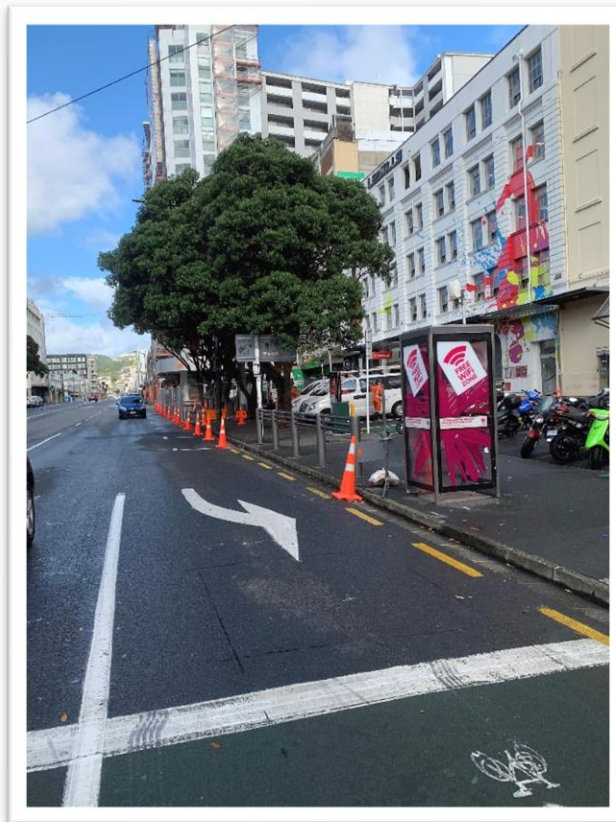


Not a sight you see often in inner-city Wellington, thank goodness.

This one was parked outside the TSB Arena for a weekend careers expo.



Love at first bite ... [That Little Cake Shop](#) on Victoria Street must be doing something right - they had sold out of absolutely everything on the day I popped in for a tasty treat.



What's with the cones along Taranaki Street near Les Mills? (Inglewood Place).

Well ... the man in the hard hat said they were doing electrical work, so maybe that was in preparation for Wellington Water's new Taranaki Street Pump Station going in there. What's a "pump station" you ask:

"[Wellington Water](#) is building a new pump station in Inglewood Place, off of Taranaki Street. Construction work is expected to start in 2022 and will last for approximately 12 months. A wastewater pump station is designed to collect and transport wastewater. It moves

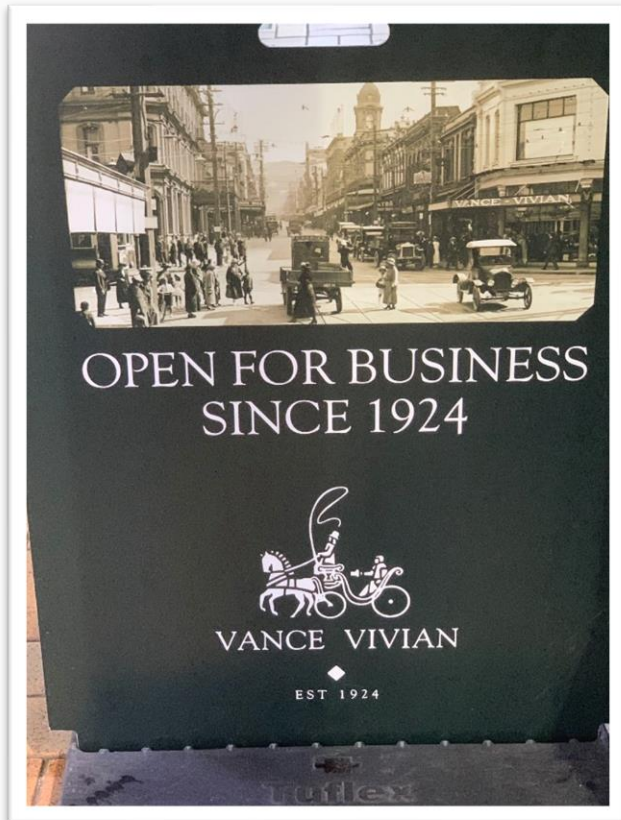
wastewater from a gravity pipe (no pressure) and pressurises it so that it can travel to the the main pipe (known as the interceptor) and then to the Moa Point Wastewater Treatment Plant."

And now you know :)



So it's nearly here .. goodbye to [David Jones on Lambton Quay](#), which opened there in July 2016, and will close on 12 June 2022.

This farewell reminds me how wonderful it is that we have [local family-owned and operated stores](#) that have stayed the distance.



It was a before the crack of dawn blessing for the new community centre, [Te Pokapū Hapori](#), in Manners Street.

"It will be a welcoming and inclusive hub for inner-city residents to gather, connect, and enjoy activities in a

space designed to enhance a sense of belonging in the central city."

The Y is running the centre and [a programme](#) is up and running - from Mums & Bubs, to eSports to Knitting Needle!



More community things in the inner-city. Spotted this on [Facebook](#):

"Love Waitangi Park? Come and join us for a family fun day on Sunday 22 May from 10am at Wellington's Waitangi Park...Why not visit the Harbourside Market in the morning, and then come

on over to the family fun day happening next door at Waitangi Park. There will be free activities for all age groups, including skating and scootering, sports play and of course there will be a sausage sizzle! No registrations required, so just hit GOING and come and enjoy the fun."

And this

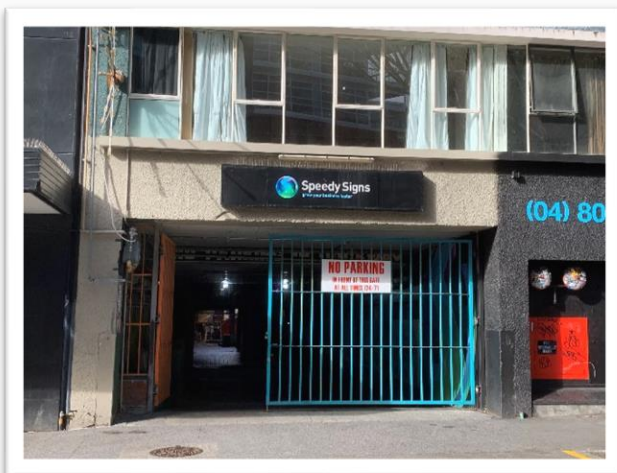


Saturday 21 & Sunday 22 May - 12pm-5pm

Mac's Brewbar. Free entry.

"A fun-filled day for the whole family to come together and enjoy the very best of what Wellington has to offer - lots of food, drink, arts and crafts, face-painter & other kids' activities!"

A bit of a before & [after](#) on the corner of Victoria & Manner Streets.



Doing some walking in the city along the concrete canyon that is Victoria Street?

You'd never know that this is a handy short cut through to Cuba Mall, would you?



Aaaw... a new store in Featherston Street (where Eloquence Boutique was) to make you smile.

[Ella Kids](#) is a "100% NZ owned and operated family business". Good to know.



Glimpsed through the ground floor window of the newly renovated apartment building on the corner of Wakefield & Chaffers Streets.

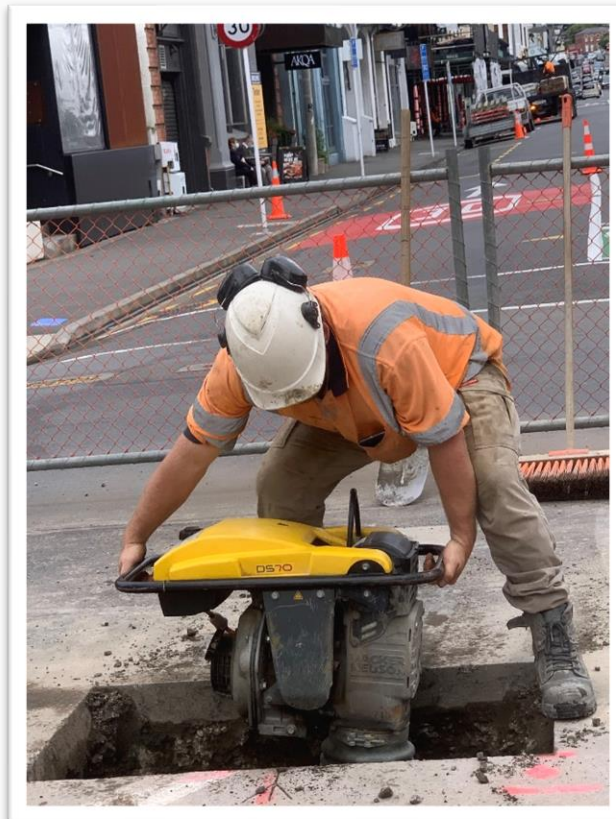
Could there be something retail-y going in there?



And what was happening here outside Defence House on a Saturday morning with a big crane and a bundle of hiz-viz clad folks?

Just a retractable awning going in to add comfort for

the local diners.



And why were there big holes being dug in Wakefield Street, down near Tory Street?

They were mapping underground service pipes, and in a blink of an eye, the holes had gone!



Gotta love a man dressed in orange wearing a road cone as a hat!

It was all about the [Dutch Embassy's World Health Day bike ride.](#)



Little did you know ... or maybe you did ... that's there a part of the inner city called Flagstaff Hill...

and this is the flagstaff.

A bit of history from a [Stuff story](#), back in 2017 when it subsequently became a public park:

"After the Wairau Affray in Marlborough in 1843, European settlers in Wellington set up flagstaffs around the city to warn of potential Māori attacks. The first recorded flag was raised on the site in 1857. In 1891, the land was first referred to as [Flagstaff Hill](#), and the name has remained in use since."

Coming soon

- Founded in Te Whanganui-A-Tara in 2022, [Sully's](#) is a place for you. We've specially picked things, from both near and far, to inspire and delight. We are only online for now, but soon you'll find us at 66A Ghuznee Street, Te Aro, Wellington City.
- And what's this we've heard on the street ... a bowling alley coming to Willis Street??

Some interesting inner-city talks coming up

If you are interested in inner-city Wellington things, here are some talks you might like to come along to:



- **PUBLIC TALK:**

FREE. CITY TALKS.

MON 16 MAY. 6-8PM. CITY GALLERY

City Gallery Wellington is excited to welcome back NZIA City Talks. In the first session of 2022 Guy Marriage will be speaking presenting his talk ***Medium is the Message: Crafting a way forward for Medium Density Housing***

Guy Marriage is an Architect, Academic and Author in Wellington. He will be talking about the importance of Medium Density Housing as a solution for Aotearoa's housing crisis, and the importance of building better, so our buildings last longer and are more enjoyable to live in. He will be introducing his two new books: Modern Apartment Design, and Medium.

[Read more here](#)

- **PUBLIC MEETING:**

FREE. OUR ICW AGM & PRESENTATION

TUES 24 MAY. 5.30PM FOR 6PM START. GARDEN ROOM.

We care about inner-city Wellington. What has [ICW](#) been doing this year - what is our focus for the future, and what would you like to see in this special part of the city? Join us for our AGM and presentation.

When: Tuesday 24 May, 5.30pm (*for 6pm start*)-7.30pm + networking time.

Where: The Garden Room, St Peter's Church - entry off Ghuznee Street. [View Map](#)

[RSVP here](#)

A gentle pitch to support us

We are the residents association for inner-city Wellington, where over 15,000 people have made their home.

We are a voluntary organisation and would love your support to help us share what's happening in our part of the city, and to help us represent things you would like to see here with local decision-makers.

Let us know your ideas: We want to hear what's important to you for this area, as well as your ideas for the inner city, and your queries, feedback and comments so that we can talk about these in our regular meetings with our local Wellington City Councillors and the team leaders we meet at the Council. [Email us to share your ideas](#)

Be a contact for us in your apartment building: There are over 125 apartment buildings in our inner-city with more to come. Apartment buildings are our modern-day 'vertical' villages and we want to help in the development of residents groups to support neighbourly things and meaningful Council consultation.

We also want to help apartment building residents to connect with other apartment buildings residents so you can find out what each other is doing when tackling knotty things like emergency planning and insurance or fun things you are doing that residents enjoy. [Email us to help build this contact list](#)

What's missing from our website: We'd also love to hear about anything you think we should add to our [website](#) and this newsletter – for example this could be important issues you think we should feature, or perhaps you know about some interesting inner-city people, organisations and stories for us to share in '[Our Patch](#)' on our website. [Email us with content ideas](#)

And perhaps you might ...

help us by becoming a financial member of ICW through a small annual fee:

- membership for residents (including residential property owners and nonprofit/community groups) is only \$26 a year
- and it's \$52 a year if you are an organisation, business, or commercial property owner.

Being a member not only helps us with our work, but also provides you with voting rights, plus some special extras such as this Inner City Sights newsletter, and early notification of the speakers presentations we are planning for the year.

- [Here's the link to our online form \(joining info is in the second half\)](#)

And/or how about being part of **our Committee** or an **associates team member**, offering your particular expertise to help us with our work? The breadth of knowledge and experience of the people living in this special part of our city is amazing, and we'd really appreciate your help and insights. [Let us know if you are interested in finding out more.](#)

Ngā mihi

[The ICW Team](#)

Disclaimer and how to unsubscribe

You have received this mail because you have subscribed to receive [Inner City Wellington Residents Association \(ICW\)](#) newsletters. This newsletter has been developed to be a companion to our monthly ICW newsletter. It is intended to be informal for general entertainment and is not intended to be an official news source. Feel free to unsubscribe or change your preferences any time.