

[View this email in your browser](#)



INNER-CITY WELLINGTON

Te Reo Pokapū o Pōneke

VOICE OF TE ARO AND WELLINGTON CENTRAL



In Our Patch

This is an informal, occasional, not to be taken too seriously, newsy pānui about some of the things we've noticed happening in the inner-city.

www.innercitywellington.nz

What's happening in Courtenay Place? Lots!



Rumour has it that a well-known Italian eatery in Courtenay Place is moving around the corner to the old Sizzlers Alley location in Blair Street, next door to Fratelli.

The fit out is underway for this much bigger space, once the home of Red Dog pizzas.



Another Italian eatery is moving in Courtenay Place. **Napoli** has taken over the space on the corner of Courtenay Place and Cambridge Terrace and is close to opening in a few weeks.





Looking very glamorous, **Spice Traders** restaurant is now open. It's located on the corner of Tory Street and Courtenay Place and is looking very different from the previous resident - Burger King.



Also starting to look glamorous is **Hummingbird**, on the corner of Courtenay and Blair Street.

The surrounding hoardings - which seem to have been

there forever - are down, and we can see the beautiful windows on display again. We're not sure if it's still the Hummingbird - opening day is not known yet, but they must be getting close.



It was recently goodbye to pizza slice Tommy Millions, but it was just a hop, skip and jump for [Lucky](#) to move in. This popular chicken place was operating out of the tiny space attached to Tommy Millions, but can now stretch its wings with a bigger kitchen and serving area.



The Tommy Millions location in Featherston Street also changed hands recently - making way for new pastry place [Little Grump](#).



SugarWoods is the new name for The Establishment on the corner of Courtenay and Blair Street. At the time of writing, its opening was delayed awaiting licensing.



If you are a fan of their range of cakes, don't worry - this little eatery on Courtenay Place isn't closing - its just going through a refit.



The [Welly Collective on Courtenay](#) folks in the old ANZ building in Courtenay Place (next to the Reading Complex entrance) seem to be going from strength to strength and it brings a family-friendly space to

explore to this part of the area.



My favourite is the Windy Welly Girl line, which captures something we all know about.

There are new displays appearing regularly - from locally-made chocolate, honey, baby clothes, T-shirts, bath bombs, jewellery and more. Fun to discover and helping to fill the gap left by the closure of the much missed Frank Kitts Underground Market on the waterfront.



Another 'something different' for Courtenay place - and helping to fill the empty Reading Complex shops void - is [A Place for Local Making](#).

Described as:

"an invitation for open-source making, joyful playing, inquisitive thinking and resourceful living in an interconnected world"



it offers a range of environmentally-focused [community-centred workshops](#) including, for example:

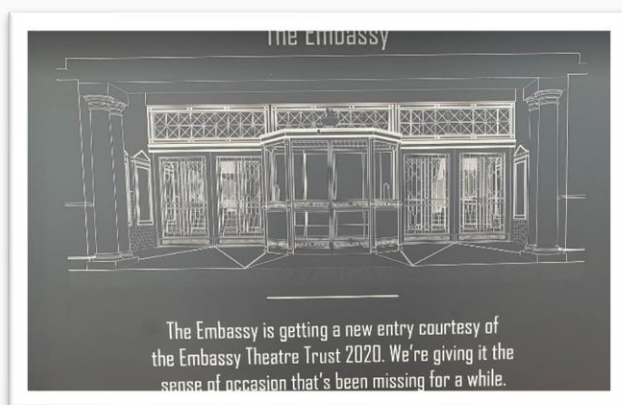
- . What if we were resourceful with the things we already have?
- . Reading Group: 'Rethinking materials and skills for volatile futures' by Chantel Carr and Professor Chris Gibson.



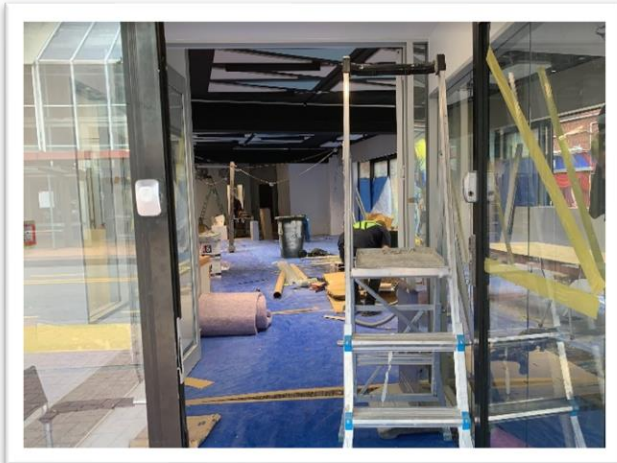
Great news for Courtenay Place is that the [St James Theatre](#) is going to re-open this year - in late June. It looks like some work is underway on the footpath outside the entrance.

Lined up for August is [Les Miserables!](#)

"Seen by more than 130 million people worldwide and after an absence of 20 years in Wellington the acclaimed musical phenomenon Les Misérables is returning to Wellington in August 2022. With glorious new staging and dazzlingly reimagined scenery, this breathtaking production of Les Misérables will be staged at the beautiful St James Theatre."



Also, there's something interesting happening at **The Embassy Theatre**. Money has been raised to enable its front doors to be restored to their former glory. [Stuff story](#)



And here's an update on what's happening at the **Community Centre** in Manners Street.

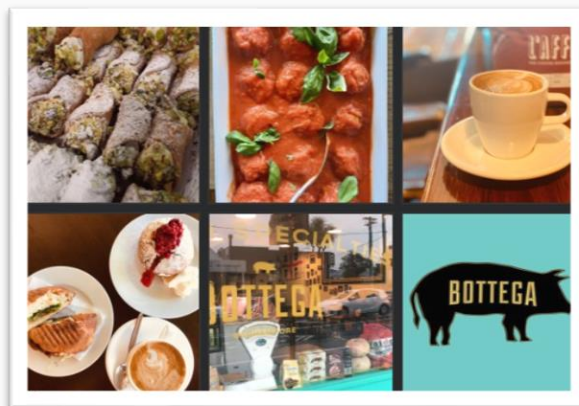
We recently [shared the news](#) that The Y has the contract to run it, and its

name is **Te Pokapū Hapori**. Final work on the fitout is happening and it will officially open in May with a dawn blessing.

What else is happening in the city?



Italian cuisine seems to be a theme for this Inner City Sightings. A brand-new Italian eatery - [Bottega](#) - has just opened in the Dukes Arcade where The Little Peckish cafe once was. Delicious, authentic Italian food, yum!





Another new eatery has popped up - this time in Chews Lane - it's **Elixir**.

It has taken over the Glass wine bar location and the team has updated the interior 'doing

all the work themselves' and is now open for business. At the time of writing, it was still waiting for its licence, and the installation of its signage, so don't walk past it without checking it out - for example, the beetroot & feta salad. Tasty.



Another discovery is soon to open, new 'hole in the wall' eatery. It's in **Cuba Street** - down the end and opposite the Mary Potter Hospice Shop - and they are busy getting it ready for opening.

That's a Cordon Bleu pastry chef in the photo doing some of the fitout DIY - so it sounds like coffee and croissants might be on the menu!



And hitting the news is that [Concord](#) has opened in the old Lido spot. This was how it was looking two weeks before it opened!

You can read about the venture in this [Stuff story](#).

As some things open, other things close



It seems that it's goodbye to the **Victoria Street Cafe** in Victoria Street.



Also, the **Hillside Downtown cafe** across the road from it is looking closed.



And long-standing **Columbus Cafe** in Featherston Street seems to have closed its doors.

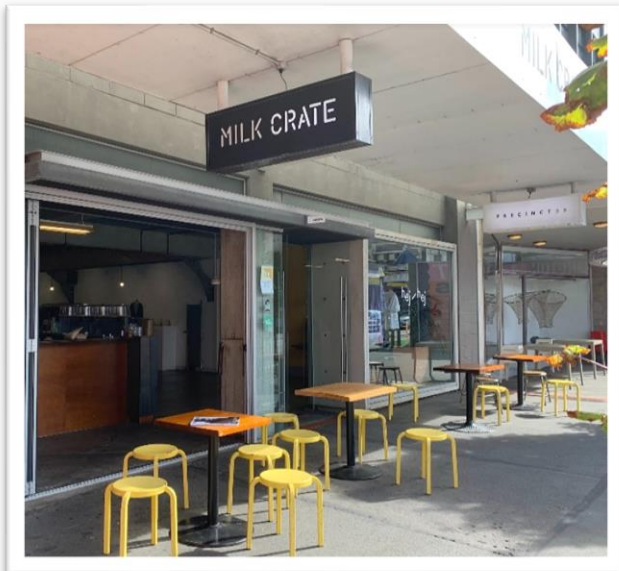


Honey shop [Colony Store](#) - on the corner of Mercer Street and Victoria Street has also buzzed away.

Something new must be coming because the 'leased' sign is up.



And also sadly "...one of Wellington's best-known Indian restaurants, **Tulsī** on Cuba St, will close its doors on Thursday after nearly 23 years of feeding the capital's curry fans..." [Stuff story](#)



Plus the **Milk Crate** cafe is also closing its doors.

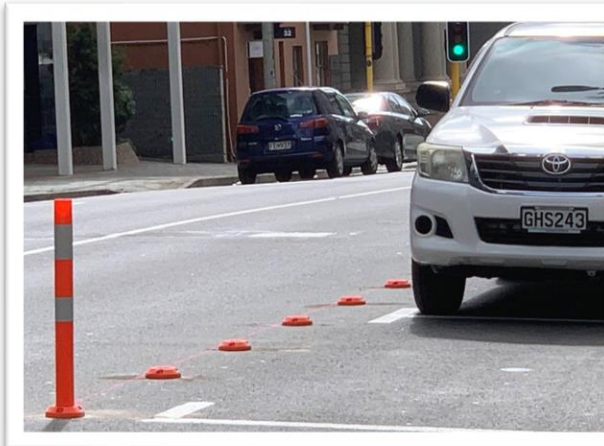
It's been a really popular coffee stop with its outdoor seating adding a great colour splash to the Ghuznee Street pavement. [Stuff story](#)

And who's on the move?

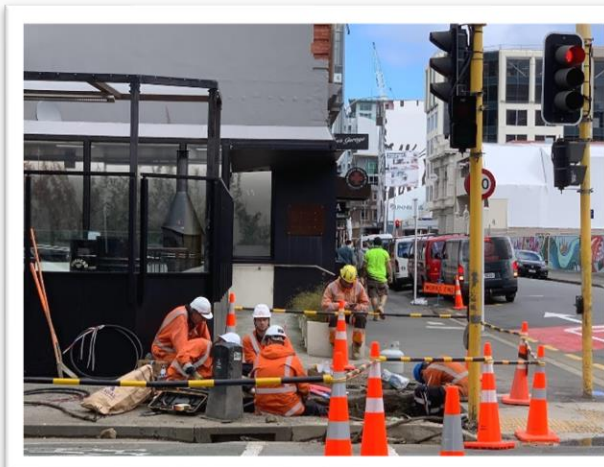


Camping store **Macpac** on Willis Street are advising: *"Temporarily closed. We're currently relocating. But, don't worry we'll only be down the road at 8 Willis St and planning to reopen on the 14th of May. Sorry for any trouble this may have caused you...."*

Around the city



When we saw someone fitting these little studs near the Beehive end of **The Terrace**, we wondered if it was something to do with cycle lanes - but it was actually marking out a new loading zone.



This hi-viz vest group caught our attention as they busily worked on the corner of **Wakefield Street and Tory Street**.

It turned out they were removing an old Australian hardwood post that had been in place for decades and was passed its use by date. Going into its place will be a new wooden post, but this time reportedly supporting a "big sign" above the roadway. Not sure what the sign will say... but maybe being close to the new Convention Centre is a clue?



It's interesting to see how the [Paddington](#) (the new build, not the bear) is going.

It's starting to take shape - there were even two trees on the pavement, ready for some landscaping.



Isn't it great to see the little parklets popping up in the city.

This one's outside [Loretta](#), while others are enjoying the Autumn sun outside [Bicycle Junction](#) and [Fred's](#) the sandwich place.



And we hope we (ICW) had something to do with children's art appearing on the hoardings surrounding the revamp of the **waterfront playground**. We did make

a gentle suggestion :)

And some mystery things we'd heard ...

Dixon Street

Could there be some changes coming for the Dixon Street pavement beside Te Aro Park?

Marion Street

Is the rumour true that a College Street furniture store is moving into the old Storage Box space.

And...

... what secrets does this bollard in **Upper Cuba Street** hold?

All will be revealed ... in time.



Some interesting inner-city talks coming up

If you are interested in inner-city Wellington things, here are some talks you might like to come along to:



- **PUBLIC TALK:**

DOING DENSITY WELL IN WELLINGTON

Better public transport, safer streets, more green spaces?

A recent report about Wellington's urban form concluded that traffic, car parks and land-banked vacant lots are occupying too much valuable land which could be used for people focused

green spaces and public activities.

Too many spaces are poorly connected, framed by buildings with inactive and dull ground floors and insufficient greening. Some wide streets promote high speed traffic and the large proportion of land used for parking make the central city less welcoming at night. We need more waterfront use, more green spaces, more high-density housing and fewer cars.

When: Thursday 5 May, 5.15pm–7.00 p.m.

Where: St Peter's Church, corner of Willis and Ghuznee Streets.

[RSVP here](#)

- **PUBLIC MEETING:**

OUR ICW AGM & PRESENTATION

We care about inner-city Wellington. What has [ICW](#) been doing this year - what is our focus for the future, and what would you like to see in this special part of the city? Join us for our AGM and presentation.

When: Tuesday 24 May, 5.30pm (*for 6pm start*)-7.30pm + networking time.

Where: The Garden Room, St Peter's Church - entry off Ghuznee Street. [View Map](#)

[RSVP here](#)

A gentle pitch to support us

We are the residents association for inner-city Wellington, where over 15,000 people have made their home.

We are a voluntary organisation and would love your support to help us share what's happening in our part of the city, and to help us represent things you would like to see here with local decision-makers.

Let us know your ideas: We want to hear what's important to you for this area, as well as your ideas for the inner city, and your queries, feedback and comments so that we can talk about these in our regular meetings with our local Wellington City Councillors and the team leaders we meet at the Council. [Email us to share your ideas](#)

Be a contact for us in your apartment building: There are over 125 apartment buildings in our inner-city with more to come. Apartment buildings are our modern-day 'vertical' villages and we want to help in the development of residents groups to support neighbourly things and meaningful Council consultation. We also want to help apartment building residents to connect with other apartment buildings residents so you can find out what each other is doing when tackling knotty things like emergency planning and insurance or fun things you are doing that residents enjoy. [Email us to help build this contact list](#)

What's missing from our website: We'd also love to hear about anything you think we should add to our [website](#) and this newsletter – for example this could be important issues you think we should feature, or perhaps you know about some interesting inner-city people, organisations and stories for us to share in 'Our Patch' on our website. [Email us with content ideas](#)

And perhaps you might ...

help us by becoming a financial member of ICW through a small annual fee:

- membership for residents (including residential property owners and nonprofit/community groups) is only \$26 a year
- and it's \$52 a year if you are an organisation, business, or commercial property owner.

Being a member not only helps us with our work, but also provides you with voting rights, plus some special extras such as this Inner City Sights newsletter, and early notification of the speakers presentations we are planning for the year.

- [Here's the link to our online form \(joining info is in the second half\)](#)

And/or how about being part of **our Committee** or an **associates team member**, offering your particular expertise to help us with our work? The breadth of knowledge and experience of the people living in this special part of our city is

amazing, and we'd really appreciate your help and insights. [Let us know if you are interested in finding out more.](#)

Ngā mihi

[The ICW Team](#)

Disclaimer and how to unsubscribe

You have received this mail because you have subscribed to receive [Inner City Wellington Residents Association \(ICW\)](#) newsletters. This newsletter has been developed to be a companion to our monthly ICW newsletter. It is intended to be informal for general entertainment and is not intended to be an official news source. Feel free to unsubscribe or change your preferences any time.