

ICWS 13 March 22

[View this email in your browser](#)



## In Our Patch

This is an informal, occasional, not to be taken too seriously, newsy pānui about some of the things we've noticed happening in the inner-city.

[www.innercitywellington.nz](http://www.innercitywellington.nz)

### Mystery drilling in Taranaki Street



There was a drilling machine working on the corner of Taranaki Street and Wakefield Street. When asked, the man in the hard hat with the clipboard seemed to indicate they were drilling to check on the nature of the ground in that spot.

---

## **Awakening the Taniwha**

The [Urban Dream Brokerage-enabled](#) initiative has now moved into the Reading Centre empty shops.



*"Awakening the Taniwha provides the opportunity for the public to respond by sharing their own lines. In an inner-city vacant space master carver Natanahira Pona and artists Ngaroma Riley and Linda Lee provide a variety of ways for people of all ages to understand taniwha, why tupuna held them in such high esteem, and how we can maintain relationships with them today."*

---

## The wounded Parliament grounds



The Parliamentary grounds are still closed and it looks like the lawn has been taken back to soil level to enable, maybe, new lawn to be rolled out next week. These pictures show a charred part of the tree trunk, and the burnt wood of the slide. The rose garden area is still intact.

## COVID-19 affecting trading hours

It's a sign of the times when even the popular McDonalds by the Courtenay Place bus stops is restricting its opening hours - in this case only opening one day a week (Thursdays).



Other places like Joe's Garage, Poquito Café and Pandoro have also been closing early over the last week.

## **2degrees in Cuba Street**

Telco shops are adding a bit of a techy feel to Cuba Street.

The latest to move in is 2degrees - located in the area between Manners and Dixon Streets.



## **Community Hub WIP**

The interior work continues on the new Community Hub in Manners Street (near the Opera House).

The decals on the doors look great - the leftover signage from the previous liquor store (above the door and on the side of the building) not so much :)



Still no word on who has the contract to run it.

## St James getting closer to opening

It was great to see some of the scaffolding around the theatre was starting to come down last week.

([from Stuff](#))



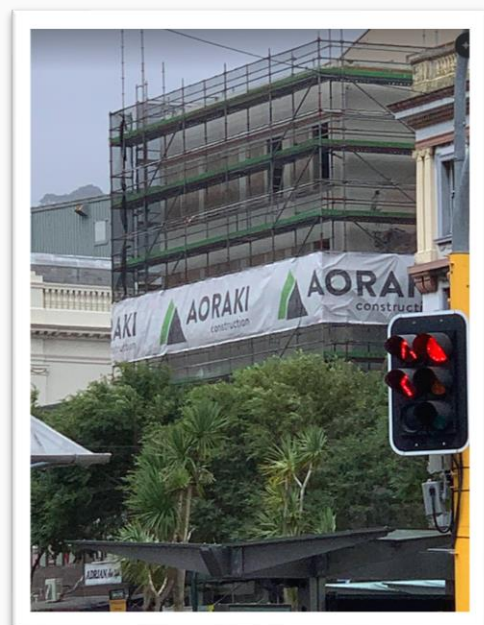
Contingency planning is under way to ensure Wellington's St James Theatre will be able to open in May, with workers in bubbles to prevent Covid-19 delaying the project – again.

Wellington City Council head of property Peter Brennan said those issues had been worked through, and the theatre was due to reopen in the second week of May, Covid-dependent.

## Conversion to residential

Aoraki Construction is busy converting Trojan House on Manners Street in Courtenay Place (near the Opera House).

The revamped building will contain 22 one to two bedroom apartments, including 2 penthouses with roof decks, and 5 retail tenancies on the ground floor.



Work includes re-strengthening the existing structure via new foundations and concrete shear walls. Existing windows will be replaced, and the interior apartments will "make great use of the building's 1934 deco-era charm!". [More info/pix here](#)

---

### **New build - Aro**

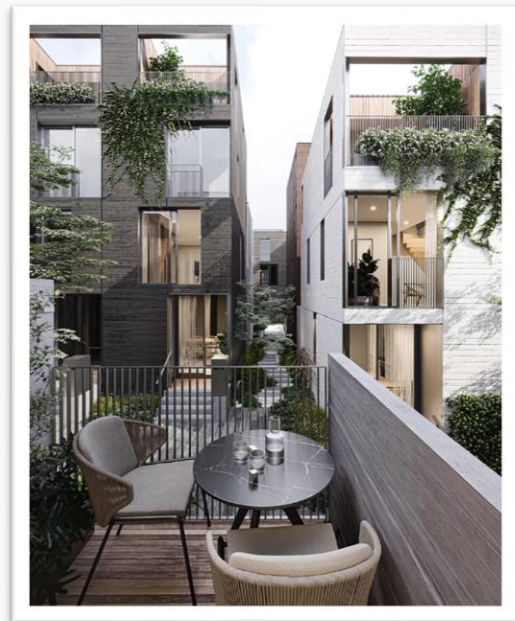
Aoraki Construction is very busy because it is also working on Aro.

The site is located at the top of Victoria, Willis and Vivian Street on the current carparking site.

It will comprise 61 terraced townhouses and a 4-storey (48-unit) apartment block, separated by pedestrian laneways throughout. The 48-unit apartment block is set to kick off in early 2022.

[More info/pix here.](#)

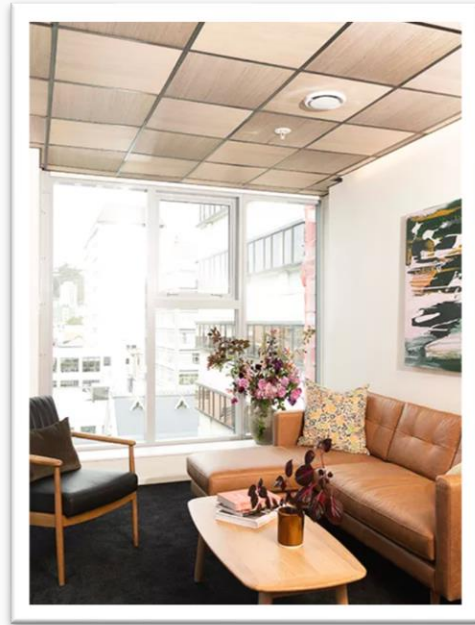
---



## Conversion - Education House

Well, it looks like Aoraki Construction is truly the flavour of the month as they are also doing the work on converting Education House on Willis Street.

"Education House is a retrofit of an existing 13-storey building, converting it from office space into apartment living. It is a joint venture between The Wellington Company and the Wellington City Council, with the council taking a long-term lease on the building to manage the new complex as part of the [Te Kainga Programme](#).



The aim of the programme is to provide secure, affordable, long-term rental accommodation for lower to medium income individuals/families employed in essential public sector service roles. This project will help to alleviate some of the pressure on inner-city living and provide 110 additional apartments - predominantly two bedrooms each - right in the heart of town within easy walking distance of the CBD and many of Wellington's best eateries."

---

## New build - Paddington



Paddington is the new build on the Taranaki Street/Jessie Street block. It looks like some of the street-facing units (described previously as suitable for "retail/office or showroom") are close to ready in one part of the build. [More info.](#)

---

## Ironhorse Construction

Another very busy construction company is Ironhorse Construction.

Their name is up on the currently closed **Molly Malones pub** and also

the **Sports Bar** - both corner bars in Courtenay Place. And it turns out they are also active in a variety of places in 'our patch', ie:

- **256 Lambton Quay**

Redevelopment works involved the conversion of the office





tower into a 68 unit service apartment hotel.

- **Astoria, 159 Lambton Quay**

Refurbishment to become an Italian-styled restaurant and bar, and separate coffee kiosk.

- **191 Cuba Street**

Seismic strengthening and refurbishment of three storey heritage-listed building located on premium corner site at Cuba and Vivian Streets.

- **141 Cuba Street**

Refurbishment of the Level 1 & 2 Apartments above Scopa Café comprising per level 8 bedrooms, central bathrooms, kitchen/dining room and lounge. This work included a complete remodel of the kitchen, floor & wall finishes and bathroom refresh. Additionally, a new central fresh air system and heat pumps were installed for thermal comfort. Last additional sound rated walls & acoustic treatments have been constructed between the lounge/kitchen and bedrooms.

### **Future projects**

And their website mentions:

- Korea House, 48 Courtenay Place
- 32 Kent Terrace
- 147 Thorndon Quay

Intriguing.

---

## One final thing - "Seeds to Feeds"

Trish wants you to know about this and to help spread the word :)

She says she'll be providing more info about the 18 Te Aro event "Into the Wild of our City". ([Read more here](#))

## About Seeds to Feeds

Seeds to Feeds is a new summer-long festival celebrating locally grown, naturally grown, community-building food. The festival supports local suburb-based teams of cooks, hosts and growers to:

- Develop a vision in September for Seeds to Feeds in their suburb
- Grow, forage and preserve local food throughout the summer
- Run food-related events throughout the summer using local knowledge such as educational workshops, practical classes and working bees
- Cook and host a delicious community-based dinner experience in Feb-March, where the food they have grown, foraged, caught and produced is the star of the show.



## **A gentle pitch to support us**

**We are the residents' association for inner-city Wellington, where over 15,000 people have made their home. We are a voluntary organisation and would love your support to help us share what's happening in our part of the city, and to help us represent things you would like to see here with local decision-makers.**

**Let us know your ideas:** We want to hear what's important to you for this area, as well as your ideas for the inner city, and your queries, feedback and comments so that we can talk about these in our regular meetings with our local Wellington City Councillors and the team leaders we meet at the Council. [Email us to share your ideas](#)

**Be a contact for us in your apartment building:** There are over 125 apartment buildings in our inner-city with more to come. Apartment buildings are our modern-day 'vertical' villages and we want to help in the development of residents groups to support neighbourly things and meaningful Council consultation. We also want to help apartment building residents to connect with other apartment buildings residents so you can find out what each other is doing when tackling knotty things like emergency planning and insurance or fun things you are doing that residents enjoy. [Email us to help build this contact list](#)

**What's missing from our website:** We'd also love to hear about anything you think we should add to our [website](#) and this newsletter – for example this could be important issues you think we should feature, or perhaps you know about some interesting inner-city people, organisations and stories for us to share in '[Our Patch](#)' on our website.

[Email us with content ideas](#)

## **And perhaps you might ...**

help us by becoming a financial member of ICW through a small annual fee:

- membership for residents (including residential property owners and non-profit/community groups) is only \$26 a year
- and it's \$52 a year if you are an organisation, business, or commercial property owner.

Being a member not only helps us with our work, but also provides you with voting rights, plus some special extras such as this Inner City Sights newsletter, and early notification of the speakers presentations we are planning for the year.

- [Here's the link to our online form \(joining info is in the second half\)](#)

And/or how about being part of **our Committee** or an **associates team member**, offering your particular expertise to help us with our work? The breadth of knowledge and experience of the people living in this special part of our city is amazing, and we'd really appreciate your help and insights. [Let us know if you are interested in finding out more.](#)

## **Ngā mihi**

[The ICW Team](#)

## **Disclaimer and how to unsubscribe**

You have received this mail because you have subscribed to receive [Inner City Wellington Residents Association \(ICW\)](#) newsletters. This newsletter has been developed to be a companion to our monthly ICW newsletter. It is intended to be informal for general entertainment and is not intended to be an official news source. Feel free to unsubscribe or change your preferences any time