



## In Our Patch

This is an informal, occasional, not to be taken too seriously, newsy pānui about some of the things we've noticed happening in the inner-city.

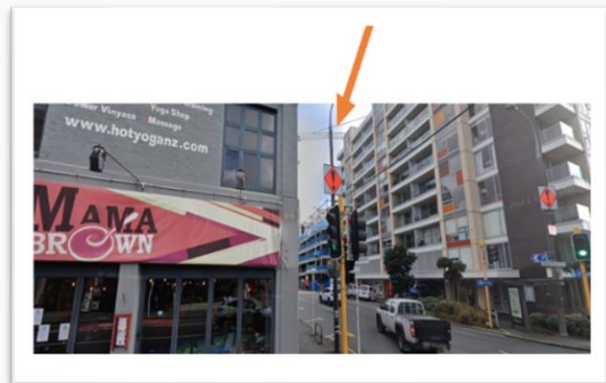
[www.innercitywellington.nz](http://www.innercitywellington.nz)

### **New CCTV camera (corner Tory/Wakefield Streets)**

A new CCTV camera has been located on the corner of Tory Street and Wakefield Street (on the Mama Brown's corner).

This was in response to residents

raising concerns about increased incidents in the area.



## Urban Dream Brokerage - Reading Central Shops (104 Courtenay Place)

The [Urban Dream Brokerage](#) folks (local contact: Jason) liaise with owners of empty shops and buildings to see if they can bring in an arts or crafts installation.



They've brokered a 2-month lease from Reading International - who sadly won't give them a longer lease in case they decide to finally do something with the building. [Here's more info.](#)

---

## Laneways project (Swan Lane/Garrett Street)

The project area covers Swan Lane and Garrett Street crossing over Cuba Street, flanked by Marion and Victoria Streets. I



It's part of WCC's Laneway strategy, the aim of which is "to improve the city's walkability, increase safety, and offer a convenient and enjoyable way to cut across city blocks. At the same time vibrant open spaces invite people in to stay a while and support local business." [Link to Concept Plans](#)

## **Graffiti increase (slightly outside our patch - Bolton St cemetery wall, The Terrace side)**

It feels graffiti is coating the inner-city at the moment - on rubbish bins, electricity boxes, boards around building sites (including around the St James building), walls, well everywhere.



This one was particularly unusual. Using the Fixit app ([App Store](#) / [Google Play](#)) to notify the Council does usually lead to action.

---

## **New builds/conversions (Tory/Wakefield Streets)**

In the Te Papa end of Tory Street, the old [Mountain Safety House](#) (brick building) is being converted to a "5 star boutique hotel" and work is well underway.



And dismantling of the old Commonsense Organics building on Wakefield Street - which backs onto the above - is underway in preparation for the new [Otto apartment building](#).

## **New build - maybe (Alpha Street/Courtenay Place)**

It looks like there may be enough sales for the [Hyde Lane](#) apartment building to happen. If so, it will be built on Alpha Street (off Cambridge Terrace) but with a walkthrough to Courtenay Place which enables it to have a Courtenay Place address (11 Courtenay Place).



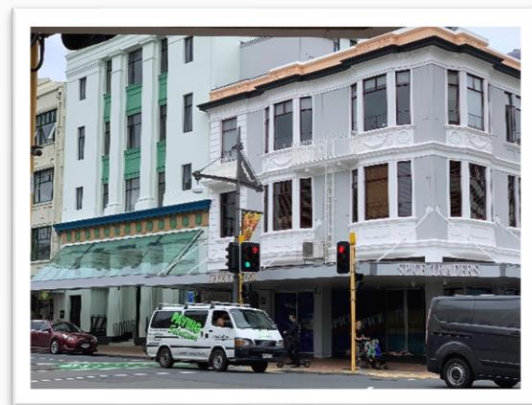
It also includes *"on the Ground Floor, multiple commercial tenancies are set to activate the laneway. The private residents' wellness retreat boasts an indoor pool, sauna, and gymnasium overlooking a garden terrace – the perfect place to unwind."*

---

## **Burger King becomes Spice Traders (corner Courtenay Place/Tory Street)**

The signs are up on the building that has been closed for a while since Burger King quit the scene.

[Maybe it will open soon?](#)



## **Sports Bar building works (corner Courtenay Place/Tory Street)**

Two of the big corner pubs in Courtenay Place have been closed for a while (eg Molly Malones and the Sports Bar). However construction work seems underway on the Sports Bar.



I guess it's better to have a building open again with the lights on.

---

## **Taco Bell arrives (corner Manners and Cuba Streets)**

Originating in the USA, it looks like local Taco Bell franchise owners - Restaurant Brands - have taken over the old Banks Shoes shop and will be opening soon. The location (94 Manners Street) is already up on their website. [Find out more](#)





## The children's playground (Frank Kitts Park)

Work is underway on the Frank Kitts Park children's playground - due to re-open later in the year.

The lighthouse has been removed, but will return. [This Stuff story describes the plan.](#)



## Sculpture Trust activities (the waterfront)

The sculptures on the 5 plinths beside Te Papa have changed, and the [Sculpture Trust](#) folks responsible for these also say that we should keep an eye out for a new sculpture that will be part of the landscaping of the new waterfront building down near the PWC building. It will use *"recently acquired ship timbers and artefacts from the remains of The Inconstant that was shipwrecked in Wellington Harbour in 1849"*.



Plus, they say watch out for an illuminating installation in the Waterloo Quay area later this year.

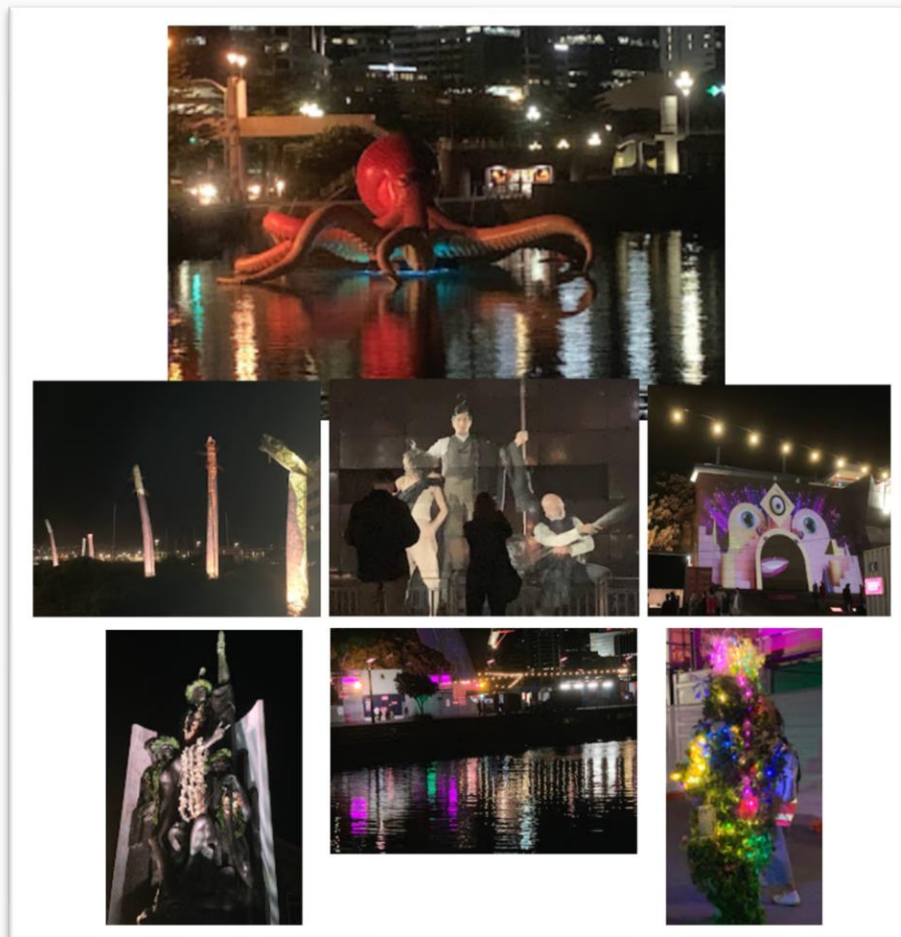
## On the Waterfront - Aotearoa New Zealand Festival of the Arts and more (Wellington waterfront)

The new sign on the Te Papa Promenade is proving popular with humans (and good dogs).



The [Aotearoa New Zealand Festival of the Arts](#) is on - it began on Monday 21 February and runs till Sunday 20 March.

The annual [Performance Arcade](#) has also been in place by Te Papa but it wrapped up yesterday Sunday 27 February.



## **A gentle pitch to support us**

**We are the residents' association for inner-city Wellington, where over 15,000 people have made their home. We are a voluntary organisation and would love your support to help us share what's happening in our part of the city, and to help us represent things you would like to see here with local decision-makers.**

**Let us know your ideas:** We want to hear what's important to you for this area, as well as your ideas for the inner city, and your queries, feedback and comments so that we can talk about these in our regular meetings with our local Wellington City Councillors and the team leaders we meet at the Council. [Email us to share your ideas](#)

**Be a contact for us in your apartment building:** There are over 125 apartment buildings in our inner-city with more to come. Apartment buildings are our modern-day 'vertical' villages and we want to help in the development of residents groups to support neighbourly things and meaningful Council consultation. We also want to help apartment building residents to connect with other apartment buildings residents so you can find out what each other is doing when tackling knotty things like emergency planning and insurance or fun things you are doing that residents enjoy. [Email us to help build this contact list](#)

**What's missing from our website:** We'd also love to hear about anything you think we should add to our [website](#) and this newsletter – for example this could be important issues you think we should feature, or perhaps you know about some interesting inner-city people, organisations and stories for us to share in '[Our Patch](#)' on our website.

[Email us with content ideas](#)



## **And perhaps you might ...**

help us by becoming a financial member of ICW through a small annual fee:

- membership for residents (including residential property owners and non-profit/community groups) is only \$26 a year
- and it's \$52 a year if you are an organisation, business, or commercial property owner.

Being a member not only helps us with our work, but also provides you with voting rights, plus some special extras such as this Inner City Sights newsletter, and early notification of the speakers presentations we are planning for the year.

- [Here's the link to our online form \(joining info is in the second half\)](#)

And/or how about being part of **our Committee** or an **associates team member**, offering your particular expertise to help us with our work? The breadth of knowledge and experience of the people living in this special part of our city is amazing, and we'd really appreciate your help and insights. [Let us know if you are interested in finding out more.](#)

## **Ngā mihi**

[The ICW Team](#)

## **Disclaimer and how to unsubscribe**

You have received this mail because you have subscribed to receive [Inner City Wellington Residents Association \(ICW\)](#) newsletters. This newsletter has been developed to be a companion to our monthly ICW newsletter. It is intended to be informal for general entertainment and is not intended to be an official news source. Feel free to unsubscribe or change your preferences any time