

December 2022



# INNER-CITY WELLINGTON

Te Reo Pokapū o Pōneke

VOICE OF TE ARO AND WELLINGTON CENTRAL



## Inner-City Sightings

This is an informal, occasional, newsy pānui about some of the things we've noticed happening in "our patch" - the inner city of Wellington

- [you can find more inner-city news here](#)
- [you can email us if you have something you've noticed](#) (innercitywellington@gmail.com)
- [you can let us know if there's something you'd like us to raise in our meetings](#)

*And if you are enjoying this newsletter and the work we do to share inner-city info, maybe consider supporting us. [Find out more here.](#)*

## Rumour has it ...

... that this building, currently going through a renovation in Eva Street, could soon become a 120-room hotel, and Mr Go might be moving into the ground floor.

Maybe opening April?



---

## And is this opening soon?

The tiles are down, the lights are on. Is the [Tryp Hotel](#) in Tory Street opening soon?

Word on the street is, yes  
- maybe early in the new year.



---

## Watch this space

Looks like there's work going on in this ground floor space in Courtenay Place, next door to Kaffee Eis.

The folks working on the fitout say it will soon be a new bar.



## **New home in Willis**

[The Malthouse](#) has settled into its new home in Willis Street.

Here's the team planning its 'New York style' menu.

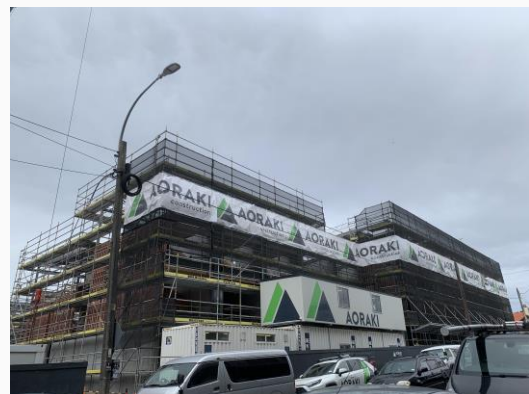


## **Building on or up**

**There's lots of vertical streets going up in 'our patch'.  
Here's a bit of a summary.**

### **Aro Living**

61 x terraced townhouses and 48 x apartments in a 4-storey apartment block.



## Two One Two

Willis Street.

92 x one & two bedroom  
apartments.



## Frederick Street Apartments

75 x 50sqm apartments



### Haining Street Apartments

9-storey residential apartment building with 78 x new units.



### Victoria Lane

123 x apartments plus office and retail space.



### The Victoria

120 Victoria Street  
83 x 1 & 2 bedroom apartments.



## Trojan House

Manners Street

22 x 1-2 bedroom apartments, plus two penthouses, and five ground-floor commercial spaces.



## And I wonder how Hyde Lane is going?

10 Alpha Street.

150 x apartments and 3 x commercial units.

Advertised to open in 2024



### **Quick tot up**

That could mean around 686 new homes with 1,000-1,200 people arriving to enjoy inner-city life.

## Plus The Paddington is up and running

151 x residential terraced houses.



**And this opened earlier in the year**

[Habitat Apartments](#)

51 x residential units and  
one commercial unit.



So that could add another 300-400 people to 'our patch' -  
welcome!

---

## 126 LQ (Lambton Quay)

And this building visual was spotted in Lambton Quay - this time its for commercial and retail use - not residential.



*"... the restoration and redevelopment of 126LQ will deliver over 7,077m<sup>2</sup> of reimagined A-Grade premium commercial office and retail space set over 9 Levels, incorporating the 150m<sup>2</sup> green roof deck providing a flexible staff and entertaining area overlooking Lambton Quay."*

---

## **Getting spruced up for summer**

*Before ...*



*After ...*





## And ...

... making sure the harbour's boardwalks are ready for visitors.



## Also on the waterfront

See anything different here?

*(the answer is at the bottom of this newsletter)*



## Is there something happening in the Reading car park area?

Yes.

If you walk along Tory Street, you might notice there's a new bit of fencing cutting off that little area that loved to collect broken bottles and cans.



And ....

The car park now has bright new flood lighting so that it won't be quite so inviting for after-dark activities. The WCC City Safety team has been busy!



## Embracing outdoor dining

Am loving the outdoor tables and chairs (aka 'parklets') popping up across the inner-city.

This one's outside Vinyl in Courtenay Place.



## It is the entertainment district

So, buskers, here's a spot ready and waiting for you - near the St James.



## They've gone, so where can you go?

Great to see that toilet block has disappeared from Te Aro Park!

And here's a handy sign showing where you can, er, go, instead.



## Good companions

If you need some advice, or some legal help - the [Citizens Advice Bureau](#) and [Community Law](#) are here to help.

And, they are now both in the same building in Courtenay Place (15 Dixon Street).

Handy!



## How green is my ...

... Cuba Street.

Looking good.



## Who knew ...

... they needed counselling?  
Maybe because they're always  
being confused with tortoises?

Actually it's a lovely plant shop,  
tucked away in the Left Bank, off  
Cuba Mall.



---

## Also in the Left Bank

Tried the Ethiopian coffee on offer in  
this much-loved restaurant yet?



And there's also an associated deli with meatier treats.

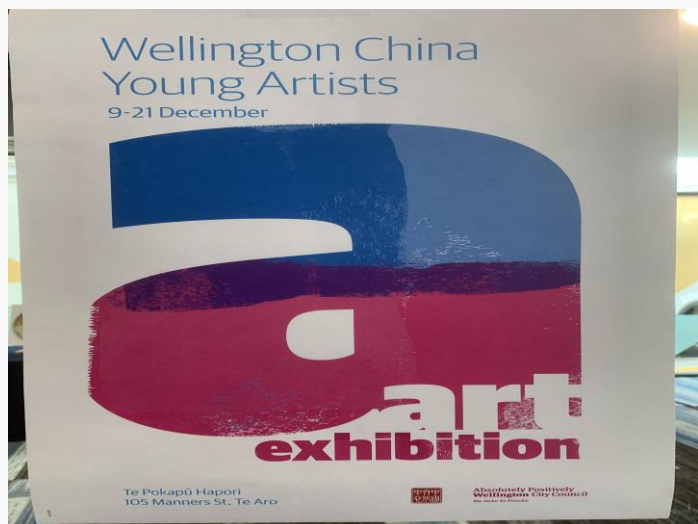


---

### Here's something to see

in Te Pokapū Hapori - the Community Centre in Manners Street.

Until 21 December.



---

### Here's something to do

on Christmas Day - an invitation from Te Pokapū Hapori.



## Here's something to plan

over the Christmas Break.

Submissions open until 13 January.





## And here's something to know about

for the new year.  
From March 2023.



---

## And, finally, here's a reminder why our city can be delightful

Discovering doggy obedience lessons on the green beside Te Papa



And that SPCA puppy harbourside walks happen on Monday nights



And that tui will sometimes land right beside you on the plants near Waitangi Park



And that the sea will sometimes hand things back - perhaps a little worse for wear.



Bring on the summer!



## **And ... the answer to what was different**

Over the last month the city's lighting elves have been busy.

All the lights along the pavement that's on the right hand side of Te Papa have had a refresh. Each tall pole was taken down, its metal recoated and its lights cleaned - and then all were put back up, shiny and renewed.

And ... there's new ground lighting along the sandy path by the skateboard park too!

---

**That's all for this eNewsletter.**

[More news here](#) / [what's on 'in our patch' here](#)

---

## **A gentle pitch to support us**

**We are the residents association for inner-city Wellington, where over 15,000 people have made their homes.**

We're a voluntary organisation and would love your support to help us share what's happening in our part of the city, and to help us represent things you would like to see here with local decision-makers.

**Let us know your ideas:** We want to hear what's important to you for this area, as well as your ideas for the inner city, and your queries, feedback and comments so that we can talk about these in our regular meetings with our local Wellington City Councillors and the team leaders we meet at the Council.

- [Email us to share your ideas](mailto:innercitywellington@gmail.com)  
(innercitywellington@gmail.com)

**Be a contact for us in your apartment building**

There are over 125 apartment buildings in our inner-city with more to come. Apartment buildings are our modern-day 'vertical' villages and we want to help in the development of residents groups to support neighbourly things and meaningful Council consultation. We also want to help apartment building residents to connect with other apartment buildings residents so you can find out what each other is doing when tackling knotty things like emergency planning and insurance or fun things you are doing that residents enjoy.

- [Email us to help build this contact list](#)

**What's missing from our website:** We'd also love to hear about anything you think we should add to our [website](#) and this newsletter – for example this could be important issues you think we should feature, or perhaps you know about some interesting inner-city people, organisations and stories for us to share in '[Our Patch](#)' on our website.

- [Email us with your content ideas](#)

### **And perhaps you might like to support ICW ...**

Maybe think of becoming a financial member of ICW through a small annual fee. Being a member not only helps us with our work, but also provides you with voting rights and early notification of the speakers presentations we are planning for the year.

- [Contact us if you are interested in supporting us financially](#) - it's only \$26 a year.

And/or how about being part of **our Committee** or an **associates team member**, offering your particular expertise to help us with our work? The breadth of knowledge and experience of the people living in this special part of our city is amazing, and we'd really appreciate your help and insights.

- [Let us know if you are interested in finding out more.](#)

**Ngā mihi**

[The ICW Team](#)

### **Disclaimer and how to unsubscribe**

You have received this mail because you are subscribed to receive [Inner City Wellington Residents Association \(ICW\)](#) newsletters. Feel free to unsubscribe or change your preferences at any time.

**How to:** [update your preferences](#) **or** [unsubscribe from this list](#)