

[View this email in your browser](#)

July 2022



**INNER-CITY**  
**WELLINGTON** Te Reo Pokapū o Pōneke

VOICE OF TE ARO AND WELLINGTON CENTRAL



## Inner-City Sightings

This is an informal, occasional, newsy pānui about some of the things we've noticed happening in "our patch" - the inner city of Wellington

[you can find more inner-city news here](#)  
[email us if you have something you've noticed](#)

## Re-awakening Courtenay Place

At the magnificent Embassy Theatre, the new entrance is nearly ready to welcome audiences ...



... While the St James is already partying!



## Re-awakening Courtenay Place

### Renovations continue ...

*"Welcome to [Trojan House](#). This is character inner-city living - offering industrial rawness in a modernised art deco building. The 22 apartments (1 and 2-bedroom) plus two penthouses are sold through, with five ground-floor commercial spaces newly released."*



### ... And a new building is on the plans

*"[Hyde Lane](#). Elevated above the rest, Hyde Lane offers unparalleled views of Wellington Harbour and City. Nestled in among Courtenay Place, the architecturally designed high-rise draws inspiration from its surroundings. Thoughtfully considered apartments with enduring appeal for both owner-occupiers and investors."*





## ... And there's another one nearby

"Welcome to [Edisons](#) - a boutique character apartment offering, found smack-bang in the middle of where it's all at: 40 Cuba Street, Wellington.



## Re-awakening Courtenay Place New walking and green spaces are in the works ...

### Work includes:

"Widening the footpath along the northern side of Dixon Street with wooden decking. This will visually and physically connect Te Aro park with the wider area and provide better sightlines to and from the park.



Installing planters alongside the decking which will help slow down the traffic, create clear boundaries between the street and pedestrian space and improve the look and feel of the space.

*Removing some carparks to create 'parklets' which will support businesses to utilise outdoor dining space."*

---

**... while the dogs of  
Courtenay Place supervise**

from their vantage points at new  
rockabilly clothing  
store [Cindyrellas](#) and the nearby  
barber shop.



## ... and in Cuba Mall

a little dog meets a living tree!



## What's that taking shape opposite the Convention Centre?

It's the previously mentioned  
seating area on the edge of  
the Reading car park.





**While down on Eva Street  
this transformation is occurring.**

From this ... .. to this. Word on the street is that a design agency, or maybe a government department, is planning to move in.



**And not far away - cone city continues  
Swan Lane is nearly there ...**

*"[This project](#) is part of Wellington's exciting Laneway strategy. The aim is to improve the city's walkability, increase safety, and offer a convenient and enjoyable way to cut across city blocks. At the same time vibrant open spaces invite people in to stay a while and support local business..."*



---

**...while Glover Park - not so much**

*"The project area covers Swan Lane and Garrett Street crossing over Cuba Street, flanked by Marion and Victoria Streets."*



---

**What makes a city work?**

**Things we don't want to think about**

*"Wellington Water is building a new underground pump station in [Inglewood Place](#), off of Taranaki Street. Starting July 2022, construction will take approximately 12 months.*

*A pump station collects and transports wastewater. It moves wastewater from a gravity pipe (no pressure) and pressurises it so*



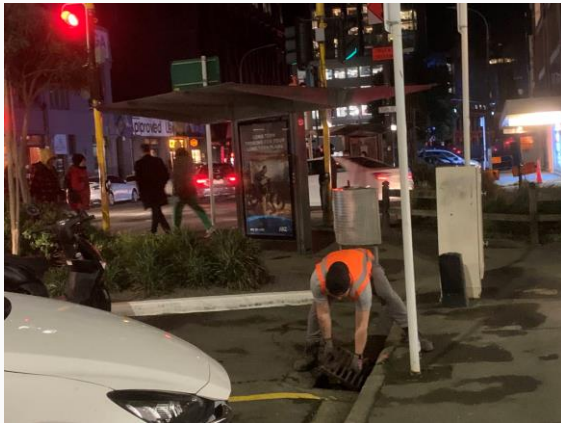


*that it can travel to the main pipe (the interceptor) and then to the Moa Point Wastewater Treatment Plant."*

---

### **late night work continues**

the Eco folks pump out the stormwater drains in Wakefield Street



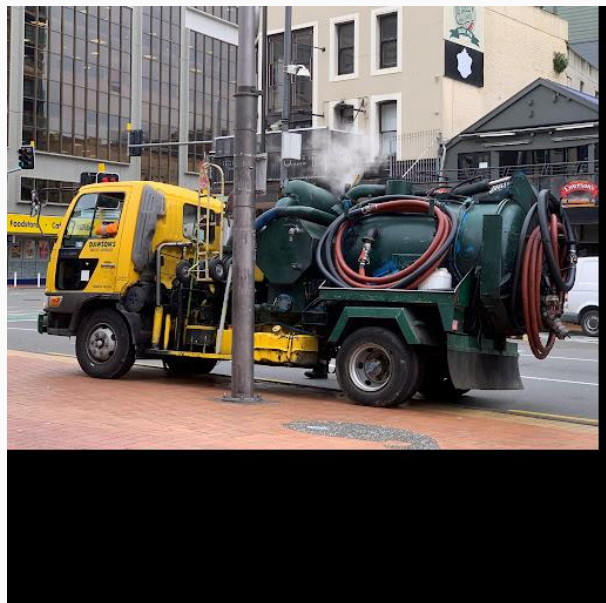
## experts dig deep

drilling core samples in Lambton Quay (that's clay and sand!) for nearby earthquake-strengthening building work.



## specialists collect

cooking oil using their cool, steampunk style vehicle, with actual steam.



## And who's helping to clean up the city every month?

### The community with [Sustainability Trust's](#) help

*"Are you sick of seeing rubbish on the streets of Wellington? Yeah, we are too! That's why we run a monthly community street clean where anyone can get involved with cleaning up our awesome streets."*



Next clean up: Wednesday,  
20 July 2022. 12:00pm-1:00pm

### But someone with anti-graffiti skills is needed here

Oh dear! This is the Reading Cinema car park wall.

Surely in a creative city we could find a mural artist who could create something magical on this wall space?





Maybe something quirky like this?



---

### **AND NOW ... for something completely different**

We're adding this bit to our eNewsletter so we can link you to some of the recent news items and content we've added to our ICW website. This includes letting you know when the city is inviting you to 'have your say'.

- [Don't miss the chance to shape the city's future - give feedback on the Proposed District Plan](#)
  - [What shape is Wellington in ahead of the local elections? - read about these challenges](#)
  - [Reminder: feedback on traffic resolution for Aotea Quay roundabout closes 5pm Sunday 17 July 2022](#)
  - [Have you seen the latest Golden Mile plans? You can have your say now. \(Deadline: Sunday 15 August\)](#)
  - [Earthquake-prone buildings - these are the questions - who has the answers?](#)
- [More news here](#) / [what's on 'in our patch' here](#)

## A gentle pitch to support us

**We are the residents association for inner-city Wellington, where over 15,000 people have made their home.**

We're a voluntary organisation and would love your support to help us share what's happening in our part of the city, and to help us represent things you would like to see here with local decision-makers.

**Let us know your ideas:** We want to hear what's important to you for this area, as well as your ideas for the inner city, and your queries, feedback and comments so that we can talk about these in our regular meetings with our local Wellington City Councillors and the team leaders we meet at the Council. [Email us to share your ideas](#)

**Be a contact for us in your apartment building:** There are over 125 apartment buildings in our inner-city with more to come. Apartment buildings are our modern-day 'vertical' villages and we want to help in the development of residents groups to support neighbourly things and meaningful Council consultation. We also want to help apartment building residents to connect with other apartment buildings residents so you can find out what each other is doing when tackling knotty things like emergency planning and insurance or fun things you are doing

that residents enjoy. [Email us to help build this contact list](#)

**What's missing from our website:** We'd also love to hear about anything you think we should add to our [website](#) and this newsletter – for example this could be important issues you think we should feature, or perhaps you know about some interesting inner-city people, organisations and stories for us to share in 'Our Patch' on our website. [Email us with content ideas](#)

### **And perhaps you might ...**

help us by becoming a financial member of ICW through a small annual fee:

- membership for residents (including residential property owners and nonprofit/community groups) is only \$26 a year
- and it's \$52 a year if you are an organisation, business, or commercial property owner.

Being a member not only helps us with our work, but also provides you with voting rights, plus some special extras such as this Inner City Sights newsletter, and early notification of the speakers presentations we are planning for the year.

- [Here's the link to our online form \(joining info is in the second half\)](#)



And/or how about being part of **our Committee** or an **associates team member**, offering your particular expertise to help us with our work? The breadth of knowledge and experience of the people living in this special part of our city is amazing, and we'd really appreciate your help and insights. [Let us know if you are interested in finding out more.](#)

**Ngā mihi**

[The ICW Team](#)

### **Disclaimer and how to unsubscribe**

You have received this mail because you are subscribed to receive [Inner City Wellington Residents Association \(ICW\)](#) newsletters. Feel free to unsubscribe or change your preferences at any time.

**How to:** [update your preferences](#) **or** [unsubscribe from this list](#)



Follow us on Facebook!



Visit our website

---

Copyright © \*Inner City Wellington Residents Association. 2022. All rights reserved.

Want to change how you receive these emails?

You can [update your preferences](#) or [unsubscribe from this list](#)