

ICW Submission

Seeking the Re-establishment of

Camera Base Wellington



Inner-City Wellington seeks to serve as a progressive and influential voice of and for the residential community in the suburbs of Te Aro and Wellington Central

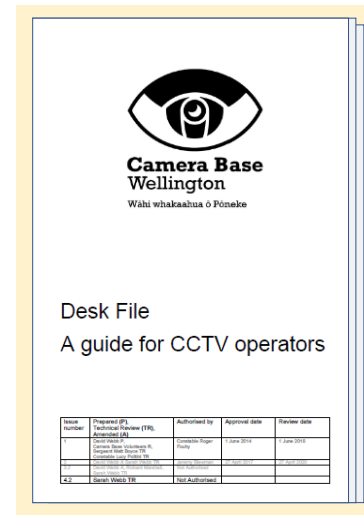
History

2013

- ✦ 2011 - city Safety cameras installed for Rugby World Cup
- ✦ Police approach ICW for volunteers to monitor the cameras and they respond immediately.
- ✦ Under the leadership of ICW committee members *David and Sarah Webb*, Camera Base Wellington is established.

2015

- ✦ By 2015 *volunteer* coordinator role had become unsustainable.
- ✦ David approached Police and WCC management.
- ✦ Paid Camera Base Co-ordinator position established to oversee the 40+ volunteers.



2015 - 2020

Over the next 5 years volunteers donated:



**403 hours of
monitoring time per
month**



**In Total
volunteers delivered 4,433
hours per year at no cost
to WCC or the NZ Police**

- ✱ 3-hour shifts.
- ✱ Daytime and nights, including weekends.
- ✱ Volunteers worked in pairs on core shifts Friday and Saturday nights until 4.30am the following morning.

2020

On 12 March, without any prior discussion or advanced warning with the Coordinators or ICW, WCC closed Camera Base.



Volunteered
463 hours
every month

THE VOLUNTEERS

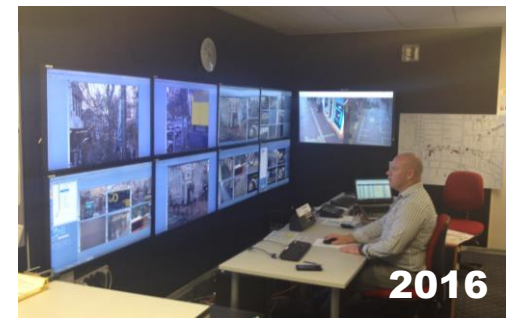
7 YEARS OF COMMITMENT
AND PRIDE IN THEIR WORK

Volunteered
4,433 hours
every year

ABBY	ANNABEL	ANDREW	BASIL	BRUCE
BRUCE F	CAMERON	CAROL	CAROL R	CINDY
COLIN	DAVID	HUGH	IAN	IM
ISLA	JESS	JO	JOHN A	JOHN R
JOHN Z	JORDAN	JOSEPH	KAREN	KATHRYN
KEITH B	KEITH T	KEVIN	LAUREN	RICK
LIAM	LUCY	MARY	MATHUS	MICHELLE
PAULINE E	PAULINE P	PETER	PETER C	RICK
ROBERT	RUFUS	RUSSELL	SAM	SARAH

SAFETY ISN'T EXPENSIVE, ITS PRICELESS.

Jerry Smith

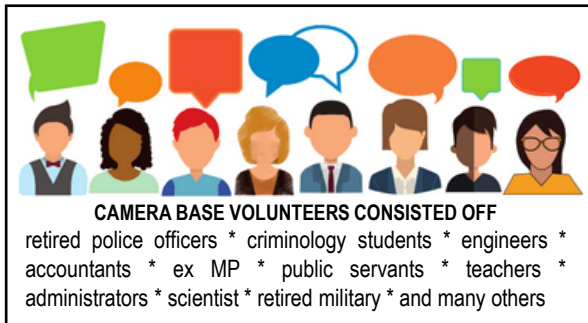


From this

To this 



Lost to the people of Wellington



1. 50+ enthusiastic,
skilled,
knowledgeable
volunteers

2. Camera Base developed a Guardian Angels approach:

- Early warning system of potential trouble
- Actively operated cameras to monitor people at risk
- Proactively identified antisocial behaviour
- Searched for community members; missing persons or displaced youth
- Coordinated with; Outreach teams, Community patrols, Local Host or Police
- Recorded the event for statistical purposes.



Lost to Wellington continued

3. Collected data for Council departments:

- Te Aro Park - Assessing Harm report
- Assessed success of footpath signage
- Traffic flows and potential clashes on the waterfront
- Pedestrian counts on Kake Tonu steps.



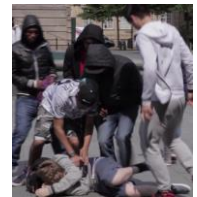
4 Security for police on the street and to utilise their resources well

5 Data gathered for trends:

- gang activity
- youth offending
- tagging
- assault
- begging, rough sleeping and busking.



Photo: NZ Edge



Lost to Wellington continued

6 Community involvement:

- Identifying new camera locations
- Noticing new hot spots when not 'on duty' and reporting in

Examples:

Spotting lost youths, breaches of liquor bans and at risk females.



7 24 hour monitoring coverage for events:

- The Sevens
- Homegrown
- CubaDupa



Photo: CupaDupa

What do other cities do?

Location	Number of Cameras	Hours per month monitored	Ownership	Volunteers or Employees?	Number of People who monitor	Comments
Auckland	1762	Full time	Council	Employees	Police FTE	
Christchurch	176	78	Council	Volunteers	25	Constable 70 hours per fortnight solely on Camera Base tasks
Dunedin	14	52	Council	Employees	Police FTE	
Gisborne	20		Trust	Volunteers		
Hamilton	75	Full time	Council	Employees	Council FTE	
Hutt Valley	59	95	Trust	Volunteers	40	
Kaitaia	120		Trust	Employees	Non-profit security company	
Levin	17	91	Trust	Volunteers	4	
Napier	16	80	Trust	Volunteers		
Nelson	17	20	Council	Volunteers	Community patrollers	
Wellington	39	403	Council	Volunteers	54	Wellington City Council fund per year: 1. 18 hours civilian admin per week 2. \$1200 for volunteer social activity 3. \$800 for biscuits

ICW Recommends

1. The Dunedin model

- Council owns and maintains the camera system
- Police monitor cameras and record events (with volunteer assistance)

or

2. The Lower Hutt model

- a Trust owns and maintains the camera system
- Police volunteers monitor cameras and record events

Questions?





Camera Base
Wellington

The best way to protect both the
policemen and the community
going forward is by creating a
system that's just, where
everyone feels safe.

Russell Simmons

