



**HOW CAN WE NAVIGATE
URBAN TRANSFORMATION...**



WHAT IF WE SHIFT MEANS OF PRODUCTION FROM ONE-OFF CRAFT

PROGRESSION OF PRODUCT VARIETY AND PRODUCTION VOLUME

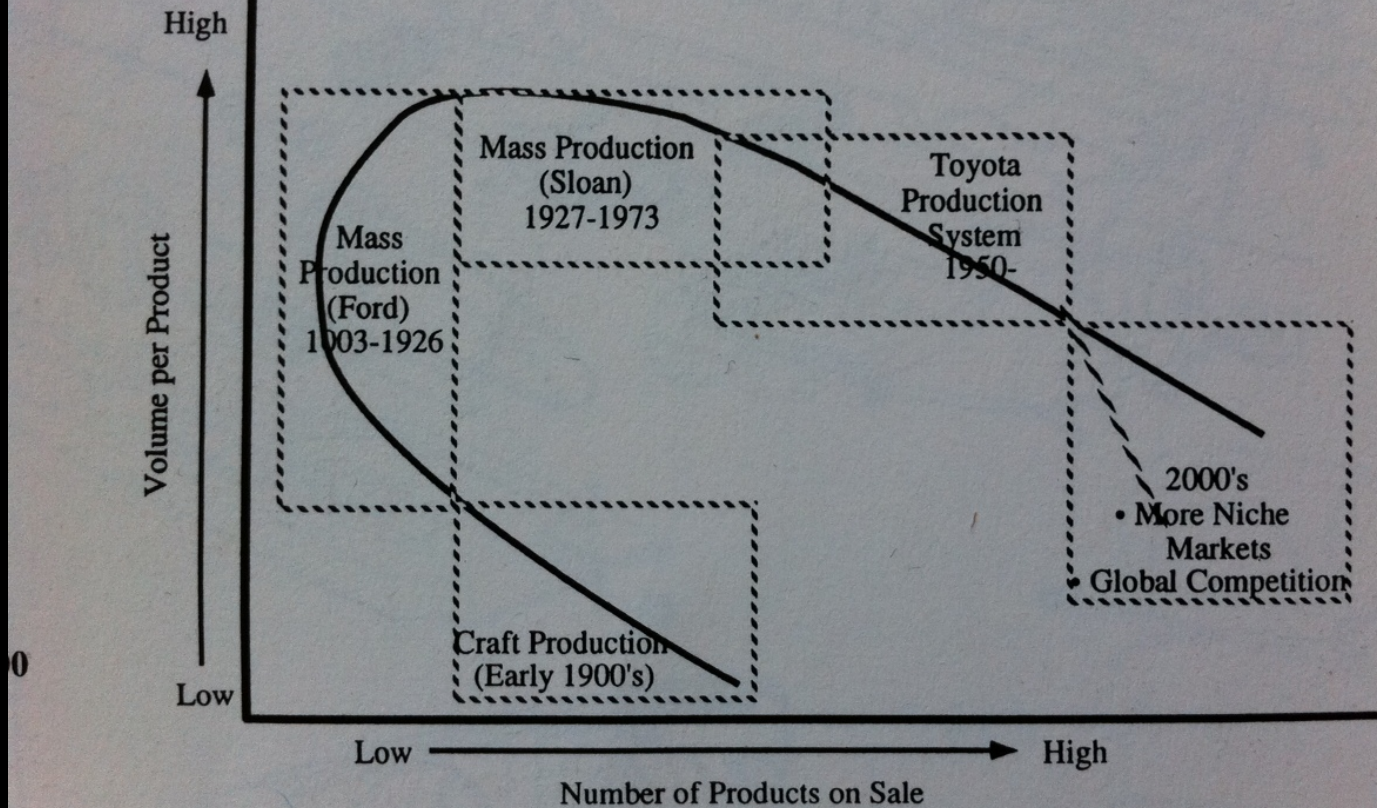


Fig. 2

**...TO MASS CUSTOMISATION
BALANCING QUALITY & QUANTITY**

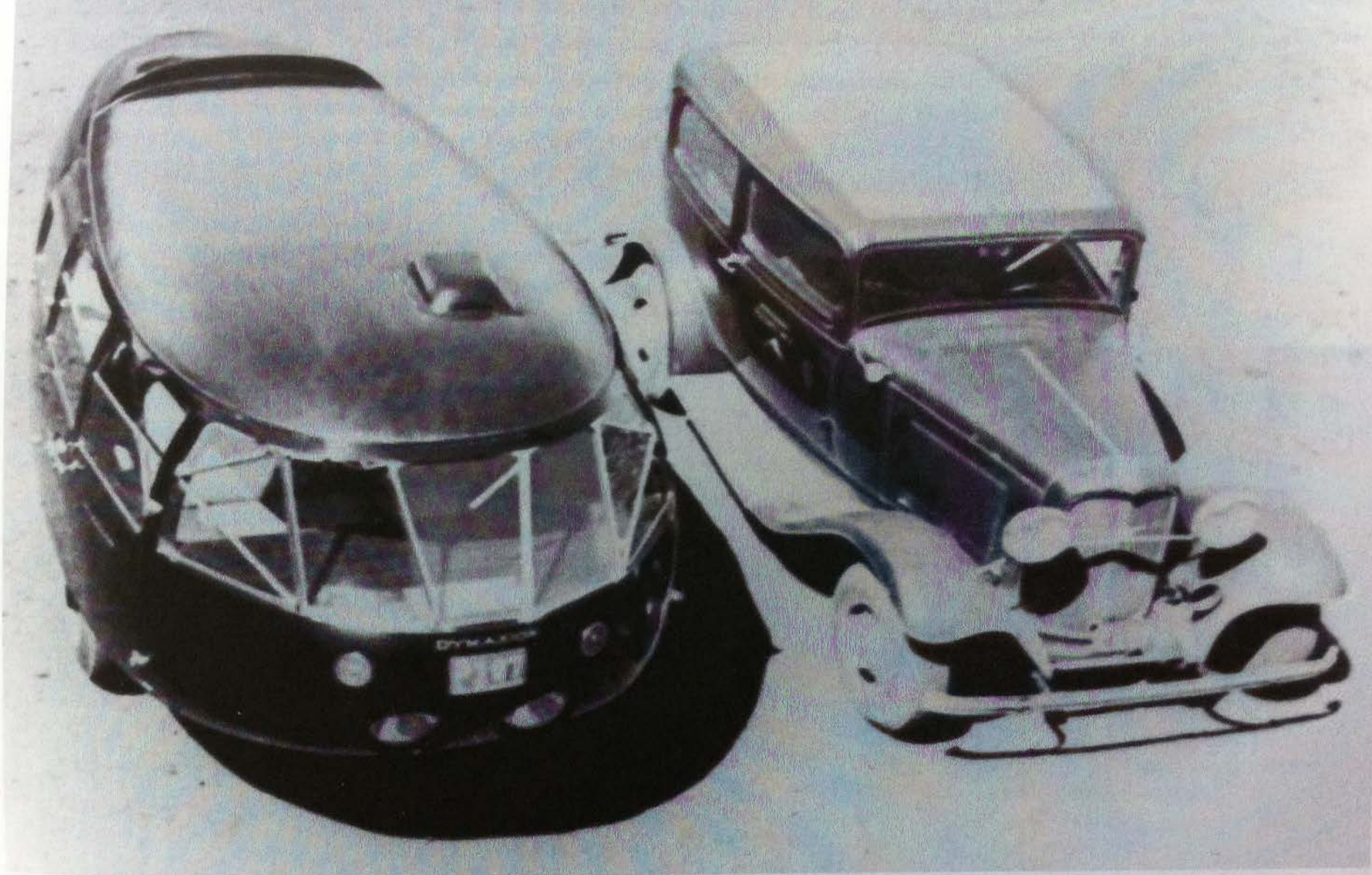


Fig. 4-15

WHAT IF... WE TRY NEW FORMS



...THAT LEARN FROM THE OLD WAYS



**HOW COULD WE LIVE
"AT HOME IN THE CITY" ?**



LEARNING FROM GRONINGEN...

CITY FOR A NEW CENTURY

NATURE LANDSCAPE & RECREATION

HOUSING

SPATIAL ECONOMIC

INFRASTRUCTURE & TRANSPORT

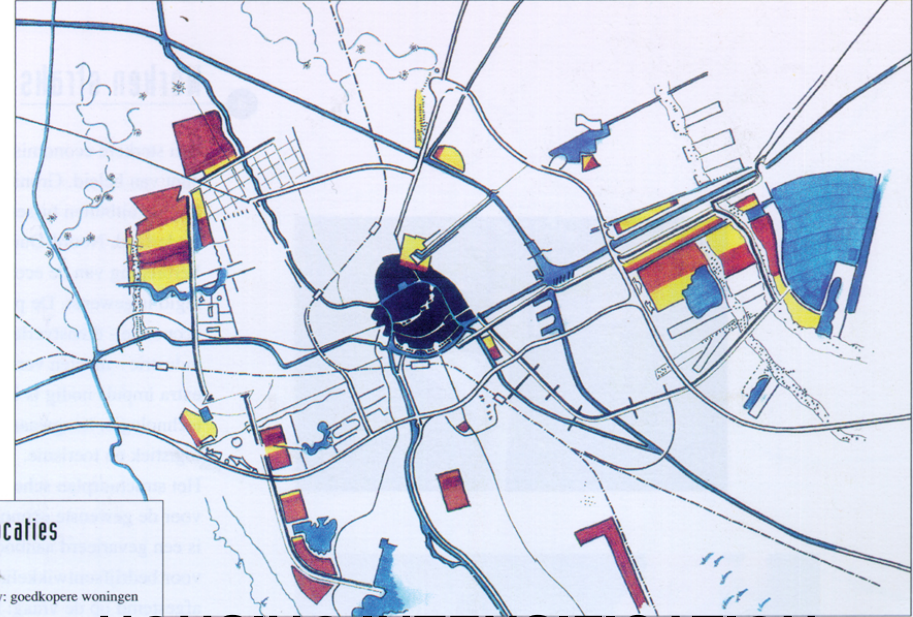
TO ESTABLISH AN URBAN ECOLOGY



Natuur, landschap en recreatie

- bos en/of ecologische verbindingzone
- park
- markant landschappelijk element (bijvoorbeeld wierde, terpdorp, streekdorp, stadsmarkering, stroomdal)
- bijzondere functies (bijvoorbeeld paviljoen, skiheuvel, kantoor, ijshal)
- hondsrug
- ecologisch/landschappelijk waardevel buitengebied
- water
- (potentieel) ecologisch waardevel

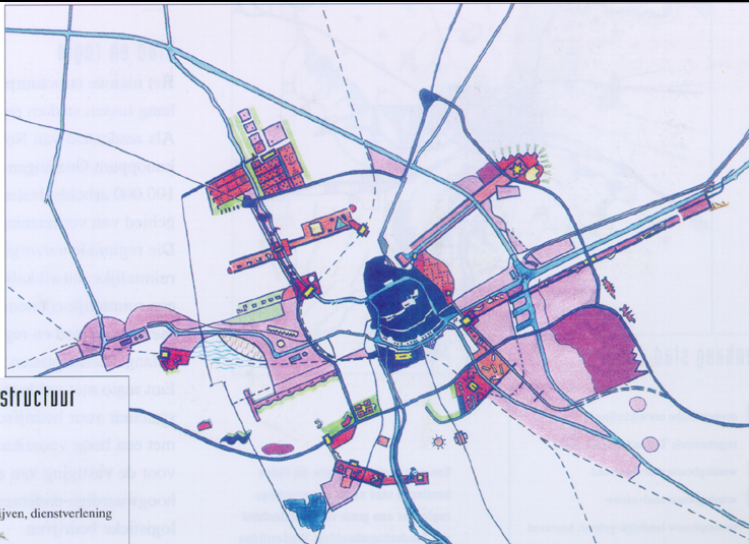
NATURE + LANDSCAPE



Woningbouwlocaties

- woningbouw: goedkopere woningen
- woningbouw: duurdere woningen

HOUSING INTENSIFICATION



Ruimtelijk-economische structuur

- werkgebied (bestaand)
- werkgebied (nieuw)
- kantoren, hoogwaardige bedrijven, dienstverlening
- en centrumzones
- openbare ruimte, openbare

SPATIAL-ECONOMIC STRUCTURE



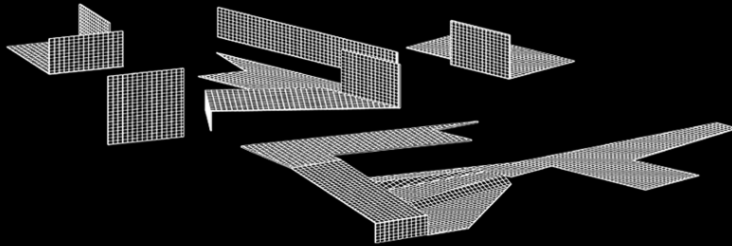
Verkeer en vervoer

- hoofdwegenstructuur
- bereikbaarheidsroute
- openbaarvervoerassen
- hoofdfietsstructuur
- spoorlijn/station
- water
- parkeer en pendel
- zuidtangente A7 (in studie)

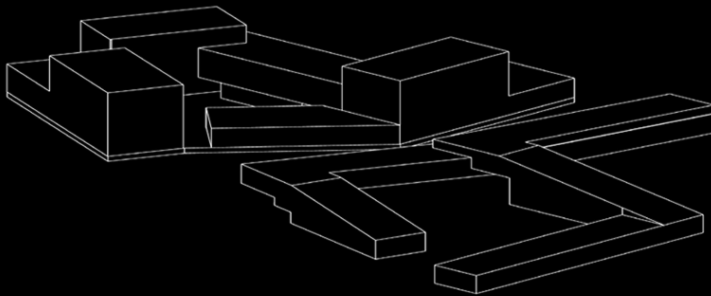
TRAFFIC + TRANSPORT

WE NEED TO SOLVE URBAN SCALE...

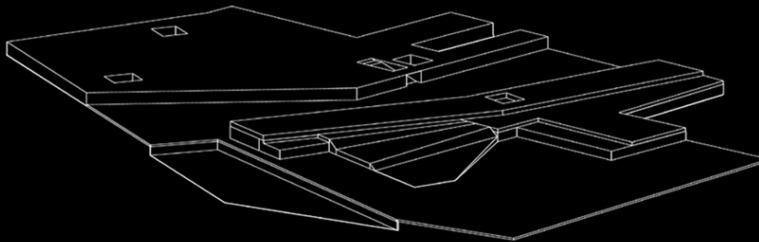
SCHOTS 1 + 2



LANDSCAPED ELEVATIONS
**NATURE LANDSCAPE +
RECREATION**

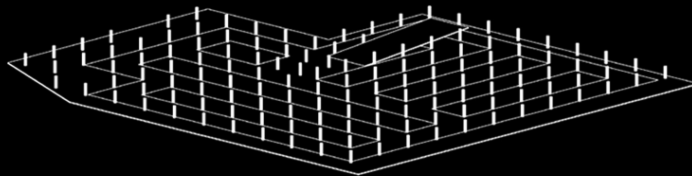


HOUSING
HOUSING LOCATIONS



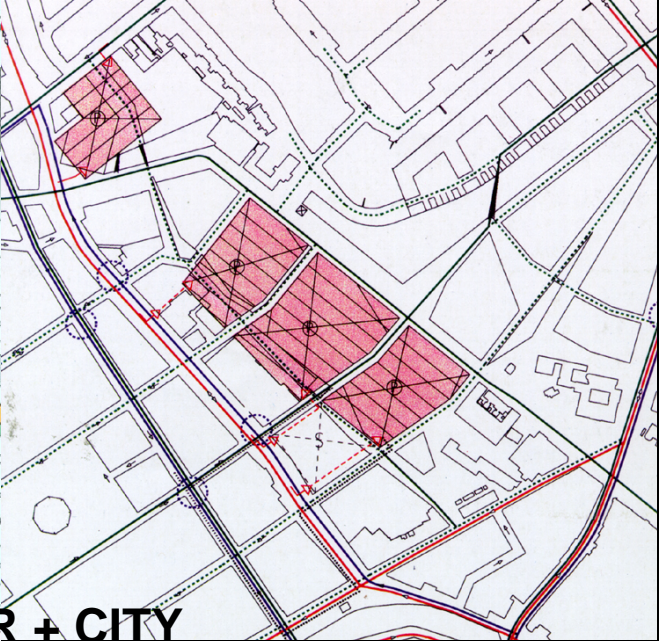
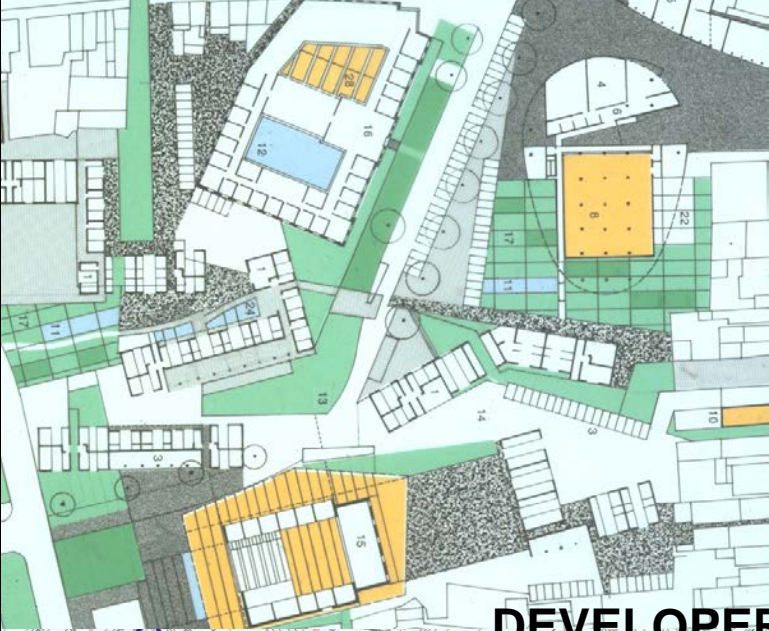
GROUND LEVEL PROGRAMME
AND LANDSCAPE

**SPATIAL ECONOMIC
STRUCTURE**

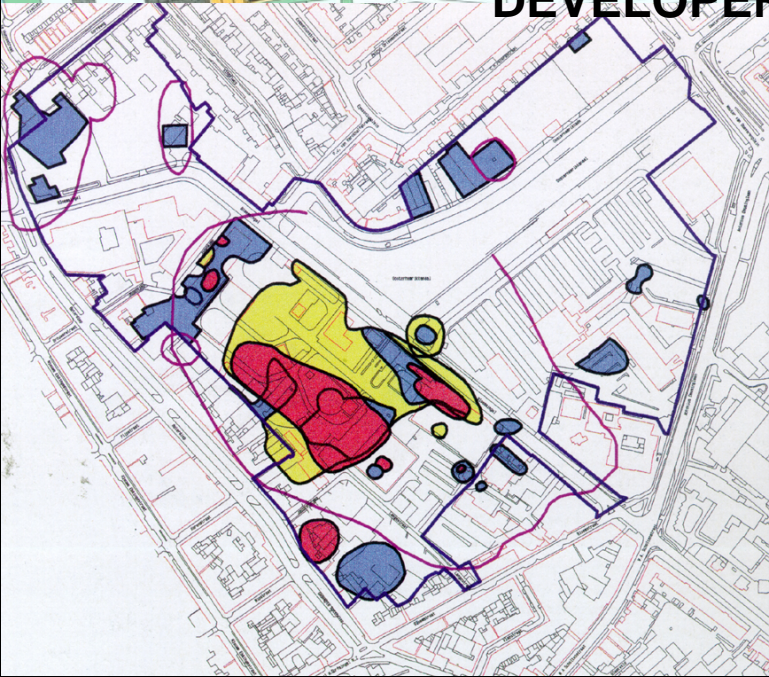


UNDERGROUND PARKING
TRAFFIC AND TRANSPORT

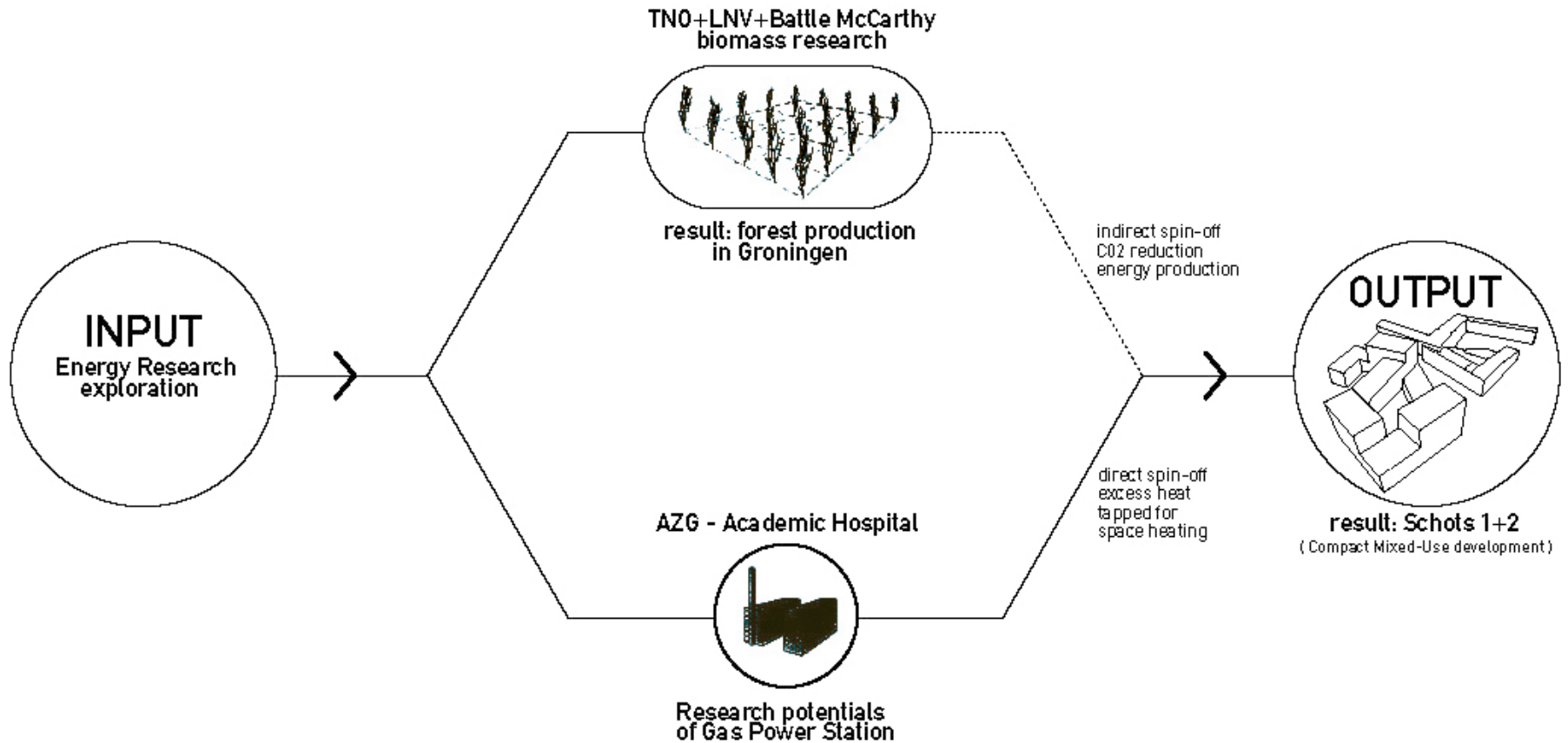
... AT BUILDING SCALE



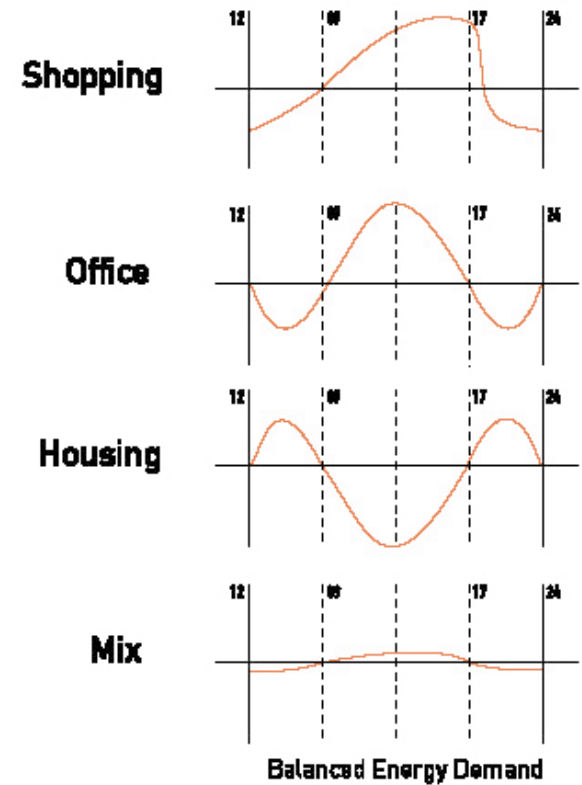
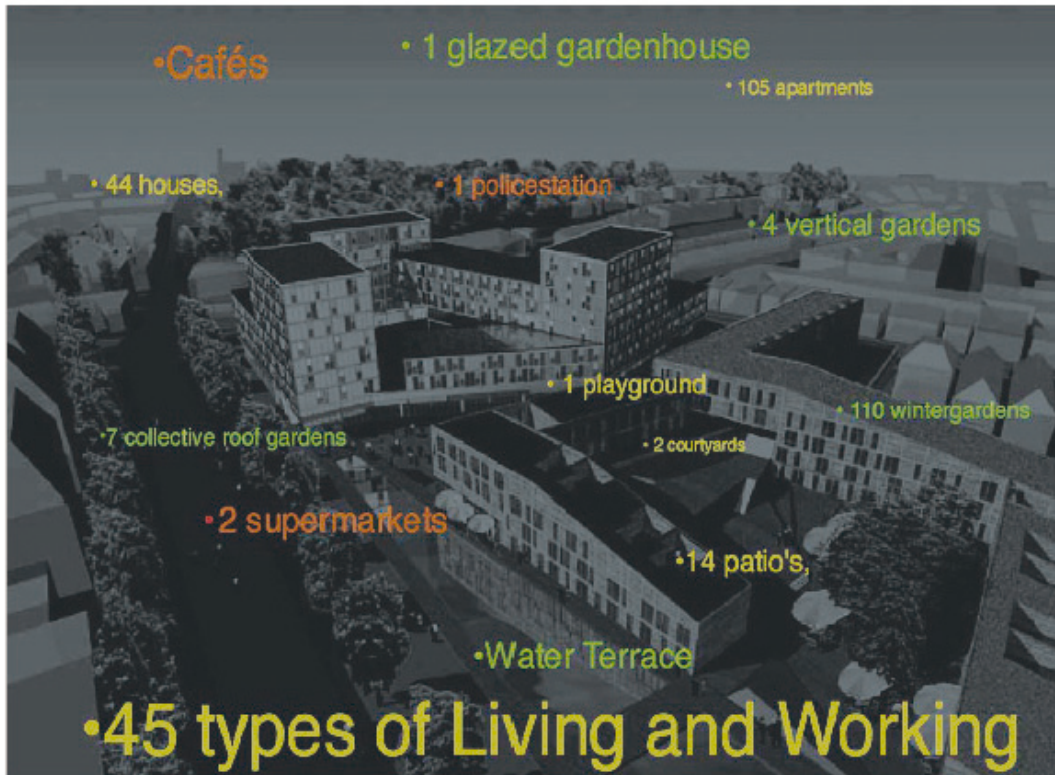
DEVELOPER + CITY



WE NEED TO RE-USE EXISTING SITES



...INTEGRATE GREEN ENERGY



...MIX UP USES

• Cafés

• 1 glazed greenhouse

• 105 apartments

• 44 houses,

• 1 police station

• 4 vertical gardens

• 1 playground

• 110 wintergardens

• 7 collective roof gardens

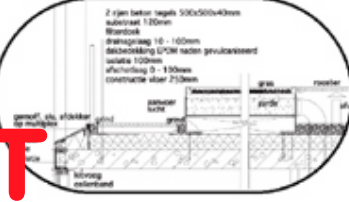
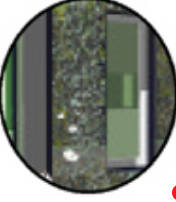
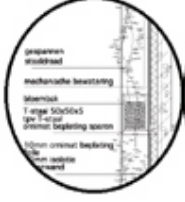
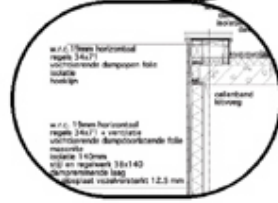
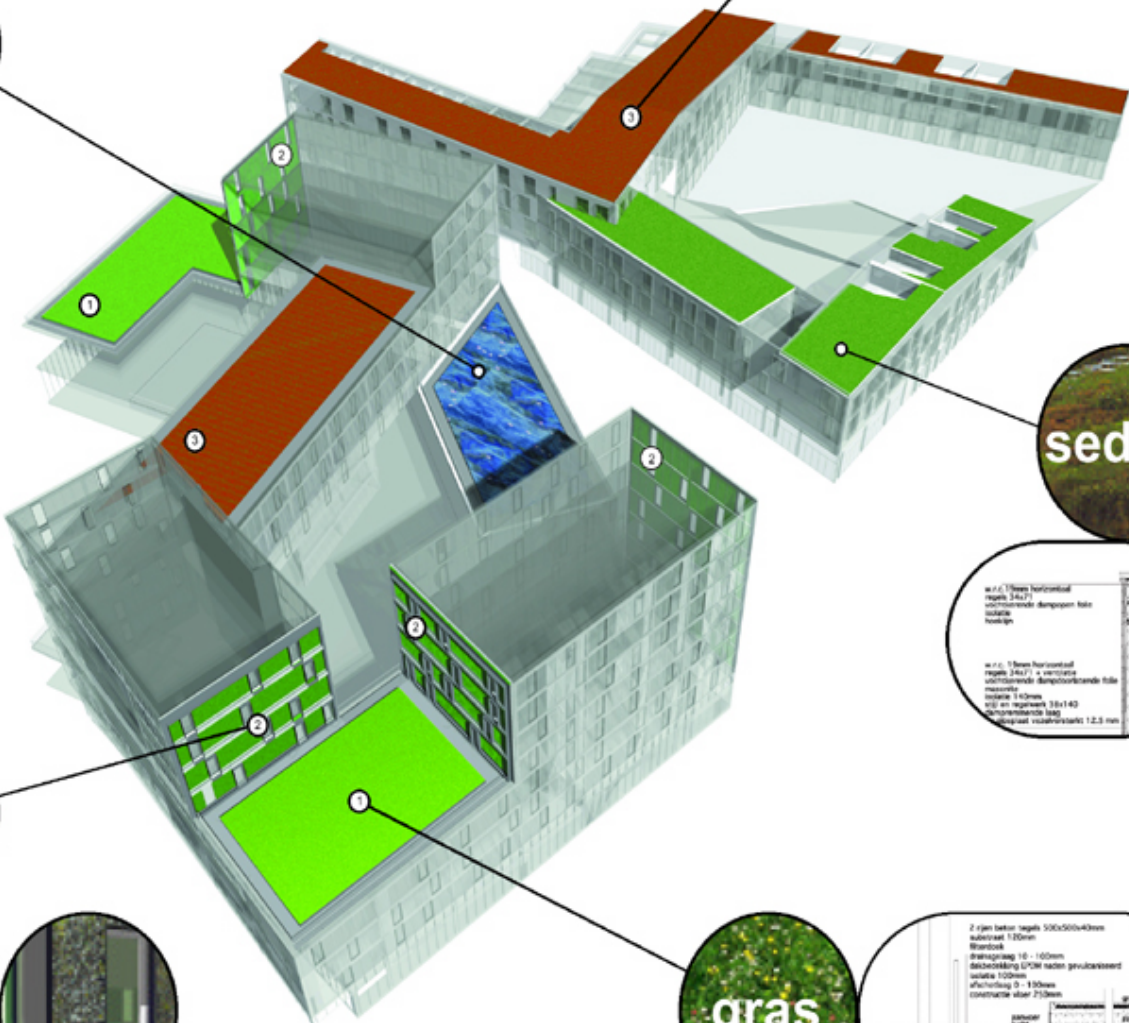
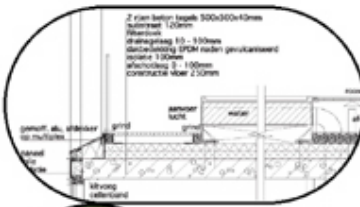
• 2 courtyards

• 2 supermarkets

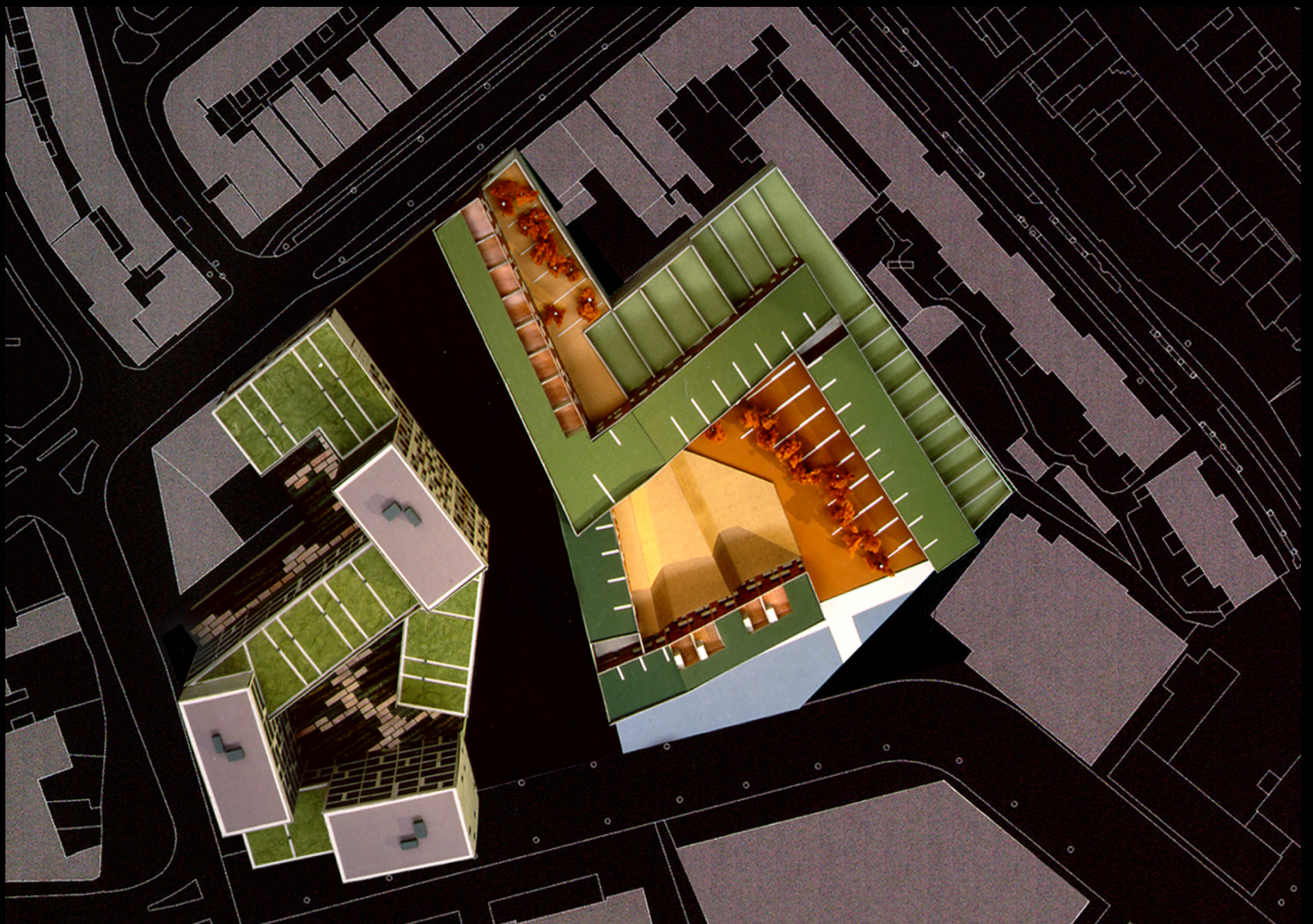
• 14 patio's,

• Water Terrace

• 45 types of Living and Working



...ADD HABITAT



**...ADD GARDENS, GREENWALLS
& DIVERSE HOUSING TYPES**



PARKING

PUBLIC SPACE

RESPONSIBILITY RE BUDGET

DEVELOPER

CITY

RESPONSIBILITY RE REALISATION

DEVELOPER

CITY

SPATIAL RESEARCH NECESSARY TO ENSURE OPTIMUM CONDITIONS FOR DEVELOPMENT

...OVERLAP PUBLIC + PRIVATE SPACE



MIX UP SCALES



CITY SCALE - MIX OLD & NEW



INFRASTRUCTURE SCALE



BUILDING SCALE



BICYCLE SCALE...



COURTYARD SCALE



COMPACT URBAN VILLAGE LIFE



AT HOME IN THE CITY



ITALIAN HILLTOWNS

...BUT WHAT ABOUT TOPOGRAPHY?



BEAUMONT QUARTER



A CONTEMPORARY HILLTOWN



WORKING WITH TOPOGRAPHY



WALKING STREETS BETWEEN LIVING



VERTICAL STREETS...



STREETS AS LIVING ROOMS



IT'S TIME TO SEED A NEW DREAM



CONTEMPORARY URBAN HILLTOWNS



BE BRAVE & CELEBRATE DENSITY